

AL05 LEDM COMMERCIAL POST AREA LIGHT

AL05CPLEDM

PROJECT:

TYPE:

DATE:

CATALOG NUMBER:



AL05CP24LM15BRS
(AL05 China Hat)

CATALOG ORDER LOGIC

EXAMPLE: AL05CP24LM15BRS

FIXTURE

AL

TYPE

05 Cast China Hat 10" dia.

POST OPTIONS

- CP24 Commercial Post 24" Height
- CP36 Commercial Post 36" Height
- Custom Height CP _____ (S)
(State Custom Height On the Line Above)

MOUNT OPTIONS

- Blank Standard U-Bracket Assembly
- S Stake Mount

12 VOLT LED	WATT	SOCKET	KELVIN	LUMEN
<input type="checkbox"/> LM15	15w	~	2800K	1280lm
<input type="checkbox"/> LM20	20w	~	2800K	1800lm

DRIVER OPTIONS

- Standard 12V Driver integrated on board
12V AC/DC input, Voltage Range 9V-18V Operating range: 12V-15V
- 120V (Internal universal driver—HW1260LED) Triac Dimmable Driver
- 277V input, (Internal universal driver—HW1260LED277R1) Triac Dimmable Driver

FINISH (STANDARD FINISHES LISTED)

- BLT Aluminum: Black Texture Polyester Powder Coat
- BRT Aluminum: Bronze Texture Polyester Powder Coat
- BRS Brass: Standard Unfinished

Optional powder coat & acid finishes available. See page 3 for more information.

SHIP WEIGHT / CARTON DIMENSIONS

Aluminum 6061	10lbs	32" x 8" x 8" (24" Height) / 13lbs 48" x 8" x 8" (36" Height)
Brass C27200	13lbs	32" x 8" x 8" (24" Height) / 16lbs 56" x 8" x 8" (36" Height)

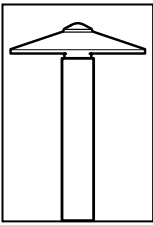
ADDITIONAL INFORMATION

- Plug-N-Play LED options available
See AL05CP spec sheet for more information



FOCUS INDUSTRIES INC.
25301 COMMERCENTRE DRIVE
LAKE FOREST, CA. 92630
949.830.1350 | TOLL FREE: 888.882.1350
WWW.FOCUSINDUSTRIES.COM





AL05 LEDM COMMERCIAL POST AREA LIGHT

AL05CPLEDM

PROJECT:

TYPE:

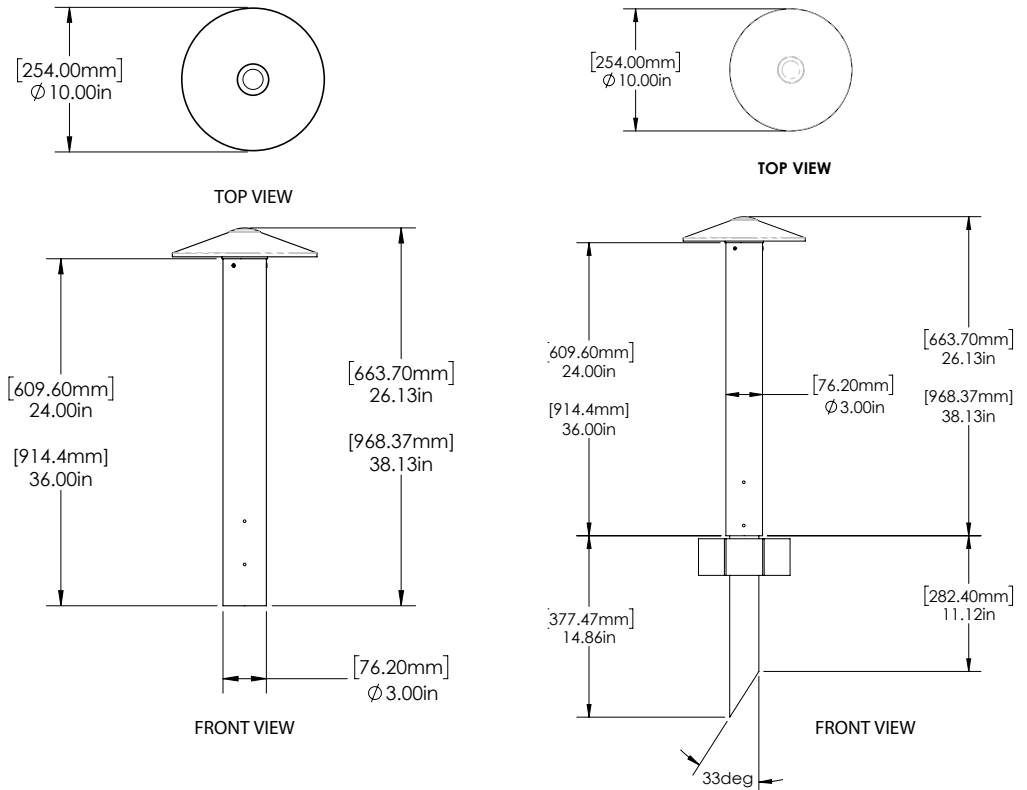
DATE:

CATALOG NUMBER:

DIMENSIONS

Dimensions Shown
AL05CP

Aluminum & Brass Version



SPECIFICATIONS

INTERNALS	VOLTAGE WIRING	12V: 24" Height- Standard 36" Black AWG 18/2, SPT1-W, 300V UL (Power with magnetic transformer) 12V: 36" Height- Standard 48.00" Black AWG 18/2, SPT1-W, 300V UL (Power with magnetic transformer) 120V: Internal driver - HW1260LED: 60W 120V electronic LED transformer, 120V AC IN, 12V DC OUT - dimmable 277V: Internal driver - HW1260LED277R1: 60W 277V electronic LED transformer, 277V AC IN, 12V DC OUT - dimmable
	HEAT SINK	Pin fin heat sink, aluminum, 1070, 80mm OD x 40mm H, Base thickness 15mm, Black anodized
	CONNECTOR	Terminal parallel, non-insulated, 22-14 AWG, clear
EXTERNALS	MATERIAL	Cast 6061 aluminum, C27200 Brass: AL05CP, 10" dia. China hat
	POST	Extrusion, 6061 aluminum, C27200 brass, round tube, 3" dia. x 24" / 36" (standard), 0.063" wall
	POST CAP	6061 aluminum, C27200 brass 3" OD x 1.25" (2.840" ID)
	LENS	Clear tempered step glass, AL05CP (2" dia. x x 1.67", 3mm +3mm th)
	MOUNT (See page 3 - for more options)	12V-120V: Standard Deck Mount: #8 gauge U-bracket galvanized steel (SDM) Stake Deck Mount ABS stake sleeve 2.875" OD
	FINISH (See page 3 - for more options)	Aluminum: Standard BLT/BRT- Black or Bronze Texture polyester powder coat Brass: Standard Unfinished
IP54	LISTINGS	IP54, IES files available for download.



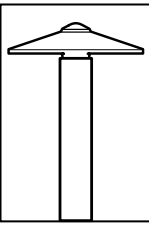
IP54



landscape • architectural • hospitality • entertainment • illumination

FOCUS INDUSTRIES INC.
25301 COMMERCENTRE DRIVE
LAKE FOREST, CA. 92630
949.830.1350 | TOLL FREE: 888.882.1350
WWW.FOCUSINDUSTRIES.COM

DESIGNED. 
MANUFACTURED. 
IN THE USA.



AL05 LEDM COMMERCIAL POST AREA LIGHT

AL05CPLEDM

PROJECT:

TYPE:

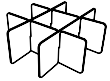
DATE:

CATALOG NUMBER:

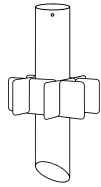
ACCESSORIES

(Configure and order accessories separately)

ABS Mounting Sleeve & Fins



FA42FIN
ABS Stabilizing Fins
(12V-277V)



FAS25
ABS Stabilizing Fins & Sleeve
(12V-277V)

U-Bracket

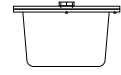


FACPUBSS
(12V-277V)

Direct Burials & JBoxes



DBR55JB
(12V-277V)



FAJBOX
(12V-277V)

FINISH

STANDARD FINISHES



Black Texture
(-BLT)



Bronze Texture
(-BRT)

PREMIUM FINISHES



Dark Bronze
(-DBZ)



Black Magic
(-BKM)



White Gloss
(-WHT)



White Texture
(-WTX)



Stucco
(-STU)



Chrome Powder
(-CPR)



Weathered Iron
(-WIR)



Weathered Brown
(-WBR)



Rust
(-RST)



Luna
(-LUN)



Rubbed Verde
(-RBV)



Hunter Texture
(-HTX)



Mineral Bronze
(-BRZ)



Semi-Gloss Black
(-BLK)

CUSTOM FINISHES Supply RAL or Pantone here

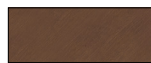
RAL #:

Need help finding a RAL color?
<https://www.ralcolor.com/>

PANTONE #:

Need help finding a Pantone color?
<https://www.pantone.com/color-finder>

ACID FINISHES Brass and Copper fixtures only



Acid Rust Brass
(-BAR)
Copper (-CAR)



Black Acid Treatment Brass
(-BAT)
Copper (-BAT)



Acid Verde Brass
(-BAV)
Copper (-CAV)



landscape • architectural • hospitality • entertainment • illumination

FOCUS INDUSTRIES INC.
25301 COMMERCENTRE DRIVE
LAKE FOREST, CA. 92630
949.830.1350 | TOLL FREE: 888.882.1350
WWW.FOCUSINDUSTRIES.COM

DESIGNED.
MANUFACTURED.
IN THE USA.

