

SL44 LED PAVER LIGHT

SL44

PROJECT:

TYPE:

DATE:

CATALOG NUMBER:



New
**COMPOSITE
PAVER BOX**



SL44LEDSBLT
(Aluminum Version)

CATALOG ORDER LOGIC

EXAMPLE: SL44LEDSBRT

FIXTURE

SL Specialty Light

TYPE

44 Paver Light 4.00" x 8.00"

12 VOLT LED	WATT	SOCKET	KELVIN	LUMEN
<input type="checkbox"/> LEDS (LED Strip)	2w	-	3000K	140lm
<input type="checkbox"/> LEDSTF (LED Strip)	.7w	-	Amber	585-595nm

(TF) Turtle Friendly Light Source

OPTIONS

- ☐ 25F 25 Feet Lead Wire (12V Only)

FINISH (STANDARD FINISHES LISTED)

- ☐ BLT Aluminum: Black Texture
☐ BRT Aluminum: Black Texture
☐ BRS Brass: Unfinished
☐ COP Copper: Unfinished
☐ SS Stainless Steel: Unfinished

Optional powder coat & acid treatment finishes available. See page 3 for more information

MATERIAL	SHIP WEIGHT / CARTON DIMENSIONS	
Aluminum 6061	2 lbs.	8"X 4"X 4"
Brass C27200	2 lbs.	8"X 4"X 4"
Copper C12200	2 lbs.	8"X 4"X 4"
Stainless Steel 316	2 lbs.	8"X 4"X 4"

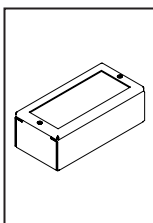
IP68



FOCUS INDUSTRIES INC.
25301 COMMERCENTRE DRIVE
LAKE FOREST, CA. 92630
949.830.1350 | TOLL FREE: 888.882.1350
WWW.FOCUSINDUSTRIES.COM

DESIGNED.
MANUFACTURED.
IN THE USA.





SL44 LED PAVER LIGHT

SL44

PROJECT:

TYPE:

DATE:

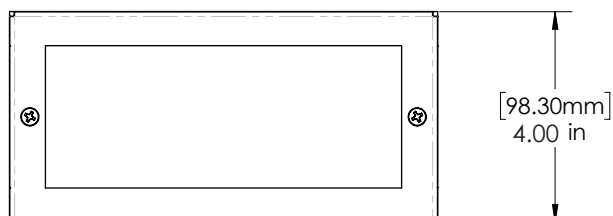
CATALOG NUMBER:

DIMENSIONS

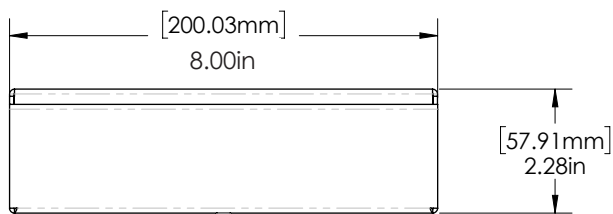
Dimensions Shown

SL44LEDSBLT

Aluminum Version



TOP VIEW



FRONT VIEW



SIDE VIEW

SPECIFICATIONS

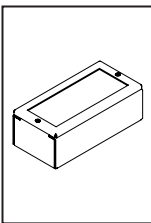
INTERNALS	VOLTAGE WIRING	12V: Standard 60.00" Black AWG 2/C, SPT1-W, 300V UL
	BRACKET	LED bracket assembly, white gloss polyester powder coat finish
EXTERNALS	MATERIALS	6061 stamped aluminum, C27200 stamped brass, C12200 copper and 316 stainless steel
	BACK BOX	Composite 4.00" x 8.00" box
	ACRYLIC	White acrylic sheet, 3.50" x 7.50" x 0.1875" THK
	FINISH (See page 3, For more options)	Aluminum: Standard BLT/BRT - Black or Bronze Texture polyester powder coat Brass: Standard unfinished Copper: Standard unfinished Stainless Steel: Unfinished only
	LISTINGS	IP68 MADE IN THE USA
 Click Icon to Download IP68	PRESSURE RATING	Vehicular pressure rating of 8800 lbs. ----->



FOCUS INDUSTRIES INC.
25301 COMMERCENTRE DRIVE
LAKE FOREST, CA. 92630
949.830.1350 | TOLL FREE: 888.882.1350
WWW.FOCUSINDUSTRIES.COM

DESIGNED.
MANUFACTURED.
IN THE USA.





SL44 LED PAVER LIGHT

SL44

PROJECT:

TYPE:

DATE:

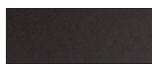
CATALOG NUMBER:

FINISHES

STANDARD FINISHES



Black Texture
(-BLT)



Bronze Texture
(-BRT)

CUSTOM FINISHES

Supply RAL or Pantone here

RAL #:

Need help finding a RAL color?

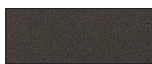
<https://www.ralcolor.com/>

PANTONE #:

Need help finding a Pantone color?

<https://www.pantone.com/color-finder>

PREMIUM FINISHES



Dark Bronze
(-DBZ)



Black Magic
(-BKM)



White Gloss
(-WHT)



White Texture
(-WTX)



Stucco
(-STU)



Chrome Powder
(-CPR)



Weathered Iron
(-WIR)



Weathered Brown
(-WBR)



Rust
(-RST)



Luna
(-LUN)



Rubbed Verde
(-RBV)



Hunter Texture
(-HTX)



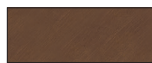
Mineral Bronze
(-BRZ)



Semi-Gloss Black
(-BLK)

ACID FINISHES

Brass and Copper fixtures only



Acid Rust
Copper (-CAR)
Brass (-BAR)



Black Acid Treatment
(-BAT)



Acid Verde
Copper (-CAV)
Brass (-BAV)

IP68



FOCUS INDUSTRIES INC.
25301 COMMERCE DRIVE
LAKE FOREST, CA. 92630
949.830.1350 | TOLL FREE: 888.882.1350
WWW.FOCUSINDUSTRIES.COM

DESIGNED.
MANUFACTURED.
IN THE USA.

