

FA032P / FA033P PRONG STAKE

FA032P/3P

PROJECT:

TYPE:

DATE:

CATALOG NUMBER:



FA032PBRZ
(Mineral Bronze)



FA033PBLK
(Semi Gloss Black)

CATALOG ORDER LOGIC

EXAMPLE: **FA033P**

FIXTURE

FA Focus Accessory

TYPE

03 Focus Stake

SERIES

3P 3-Prong Stake

FINISH (STANDARD FINISHES LISTED)

- ☐ BLK Stainless Steel: Standard Semi Gloss Black
- ☐ BRZ Stainless Steel: Standard Mineral Bronze

SHIP WEIGHT / CARTON DIMENSIONS

Stainless Steel 316 1lbs. 8" x 6" x 6"



RXD08ETCL24BARFA032P



DL15SMLEDP412VBRTFA033P



AL25SML66S112SBATFA033P

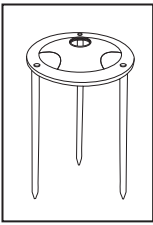
IP65



FOCUS INDUSTRIES INC.
25301 COMMERCENTRE DRIVE
LAKE FOREST, CA. 92630
949.830.1350 | TOLL FREE: 888.882.1350
WWW.FOCUSINDUSTRIES.COM

DESIGNED.
MANUFACTURED.
IN THE USA.





FA032P / FA033P PRONG STAKE

FA032P/3P

PROJECT:

TYPE:

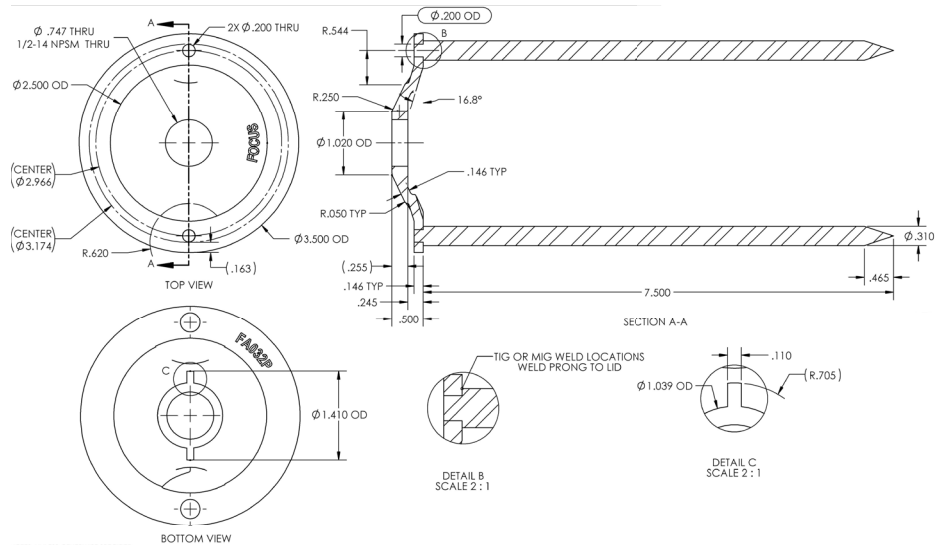
DATE:

CATALOG NUMBER:

DIMENSIONS

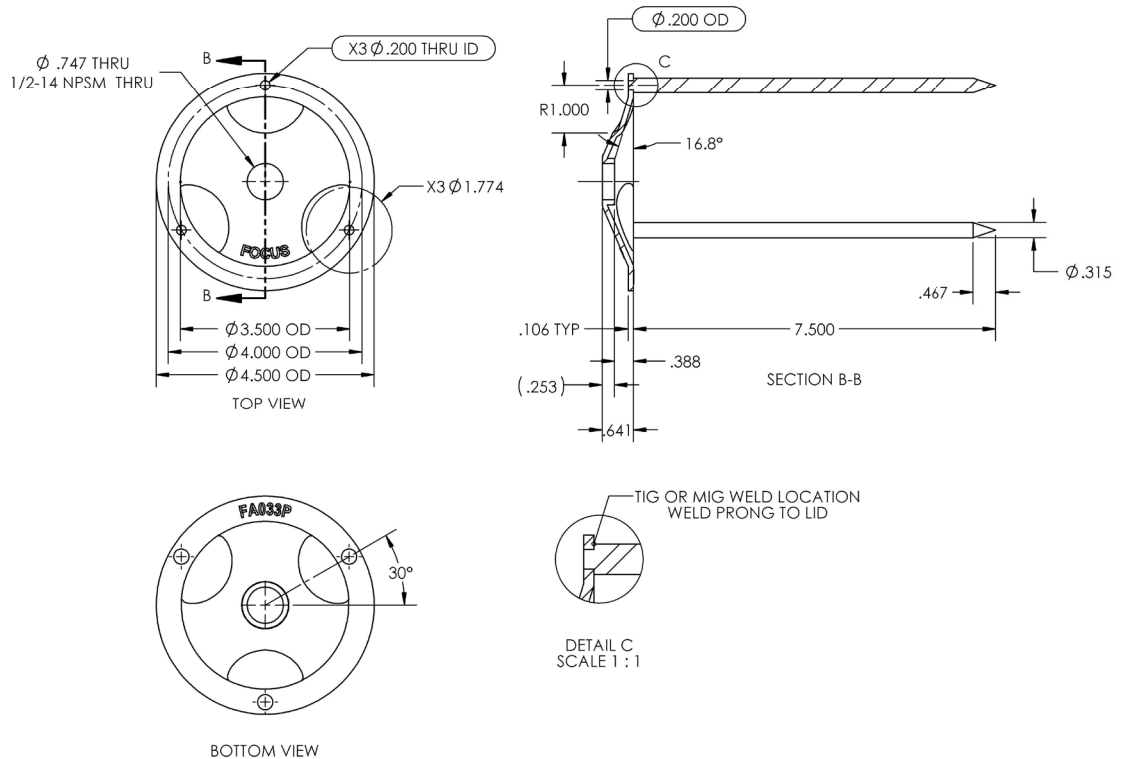
Dimensions Shown FA032P

Stainless Steel



Dimensions Shown FA033P

Stainless Steel



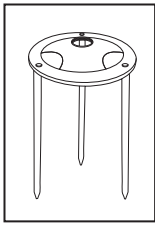
IP65



FOCUS INDUSTRIES INC.
25301 COMMERCE DRIVE
LAKE FOREST, CA. 92630
949.830.1350 | TOLL FREE: 888.882.1350
WWW.FOCUSINDUSTRIES.COM

DESIGNED.
MANUFACTURED.
IN THE USA.





FA032P / FA033P PRONG STAKE

FA032P/3P

PROJECT:

TYPE:

DATE:

CATALOG NUMBER:

SPECIFICATIONS

INTERNALS

MATERIALS

316 stainless steel, 0.50" NPS female

FINISH

Stainless steel: Standard BLK - semi gloss black polyester powder coat

Stainless steel: Standard BRZ - mineral bronze polyester powder coat

FINISHES

STANDARD PREMIUM FINISHES



Mineral Bronze
(-BRZ)



Semi Gloss Black
(-BLK)

CUSTOM FINISHES Supply RAL or Pantone here

RAL #:

Need help finding a RAL color?

<https://www.ralcolor.com/>

PANTONE #:

Need help finding a Pantone color?

<https://www.pantone.com/color-finder>

IP65



FOCUS INDUSTRIES INC.
25301 COMMERCENTRE DRIVE
LAKE FOREST, CA. 92630
949.830.1350 | TOLL FREE: 888.882.1350
WWW.FOCUSINDUSTRIES.COM

DESIGNED.
MANUFACTURED.
IN THE USA.

