

PL17S1 PATH LIGHT

PL17S1

PROJECT:

TYPE:

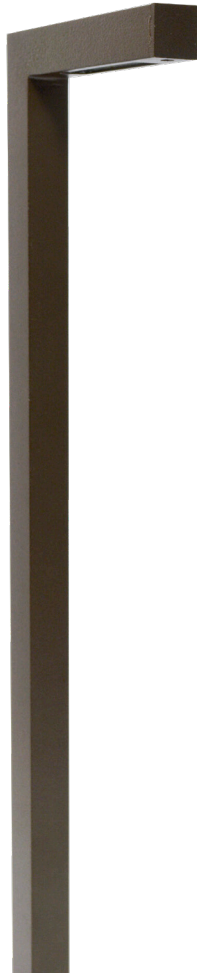
DATE: 10/1/2025

CATALOG NUMBER:



ALUM

BRS



PL17S1L12BRT



PL17S1L12BRS

CATALOG ORDER LOGIC

EXAMPLE: PL17S1L12BLT

FIXTURE

PL Path Light

TYPE

☐ 17S1 L-Shape Path Light

12 VOLT LED	WATT	SOCKET	KELVIN	LUMEN
<input type="checkbox"/> NL (No Lamp)		Ba15s Single Contact		
<input type="checkbox"/> NLBP (No Lamp)		G4 Bi-Pin		
<input type="checkbox"/> L10	3w	G4 Bi-Pin	3000K	300lm
<input type="checkbox"/> L12	3w	Ba15s Single Contact	3000K	300lm
<input type="checkbox"/> L13	3w	G4 Bi-Pin	2700K	270lm
<input type="checkbox"/> L14	3w	G4 Bi-Pin	3000K	270lm
<input type="checkbox"/> L15	3w	Ba15s Single Contact	2700K	270lm
<input type="checkbox"/> L16	3w	Ba15s Single Contact	3000K	270lm
<input type="checkbox"/> L17	3w TF	G4 Bi-Pin	Amber	585-595nm
<input type="checkbox"/> L18	3w TF	Ba15s Single Contact	Amber	585-595nm

(TF) Turtle Friendly Light Source

12 VOLT LED	WATT	SOCKET	KELVIN	LUMEN
<input type="checkbox"/> LEDS (LED Strip)	2w	None (LED Strip)	3000K	140lm

120 VOLT LED	WATT	SOCKET	KELVIN	LUMEN
<input type="checkbox"/> L160	3w	GY6.35 Bi-Pin	3000K	400lm

OPTIONS

- ☐ 25F 25 Foot Fixture Lead Wire (12v Only)
☐ NS No Stake

CUSTOM LENGTH

20.00" Standard Fixture Height

☐ Custom height _____(S)
(State Number of Inches On the Line Above)

FINISH (standard finishes listed)

- ☐ BLT (Aluminum - Black Texture Powder Coat)
☐ BRT (Aluminum - Bronze Texture Powder Coat)
☐ BRS (Unfinished- Brass)

Premium and Acid Finishes (See page 3 for more color options)

Pantone & RAL Colors (Enter RAL or Pantone number at end of part number)

MATERIAL	SHIP WEIGHT	CARTON DIMENSIONS
Aluminum 6061	(3.0lbs)	22"x6"x3"
Brass C27200	(4.0lbs)	22"x6"x3"



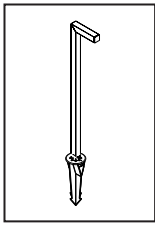
IP65



FOCUS INDUSTRIES INC.
25301 COMMERCE DRIVE
LAKE FOREST, CA. 92630
949.830.1350 | TOLL FREE: 888.882.1350
WWW.FOCUSINDUSTRIES.COM

DESIGNED.
MANUFACTURED.
IN THE USA.





PL17S1 PATH LIGHT

PL17S1

PROJECT:

TYPE:

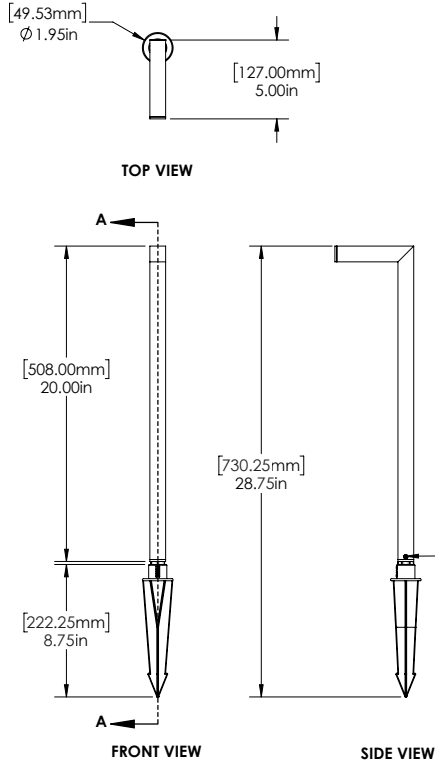
DATE: 10/1/2025

CATALOG NUMBER:

DIMENSIONS

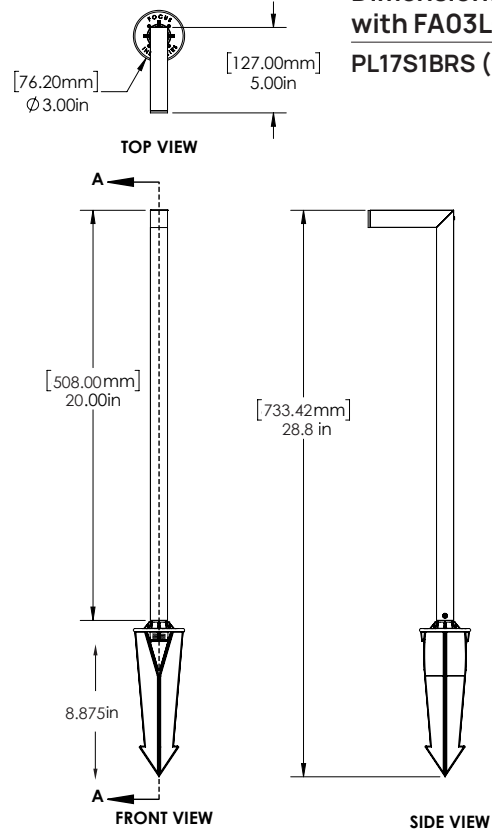
Dimensions Shown with FA03 ABS Stake

PL17S1BLT (Aluminum Version)



Dimensions Shown with FA03LG ABS Stake

PL17S1BRS (Brass Version)



SPECIFICATIONS

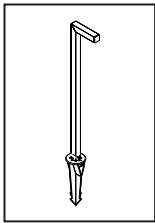
INTERNALS	VOLTAGE	12V (Power with magnetic transformer) 120V (Power with line voltage)
	WIRING	12V: Standard 36.00" Black AWG 2/C,SPT1-W,300V UL 120V: Standard 18g, black, white, green (ground)
	CONNECTOR	Terminal ring star, insulated vinyl, 22-18 AWG #8, Red
EXTERNALS	HOUSING	Extrusion, aluminum 6061, 1.00" x 1.00" Extrusion, brass, C27200, 1.00" x 1.00"
	CAP	Machining brass bottom and cap for aluminum and brass
	LENS	Clear tempered glass lens, sandblast one side
	MOUNT	12V: Aluminum version: FA03 ABS black stake, (More options available. See page 3.) 12V: Brass version: FA03LG ABS large black stake, 1/2-14NPS tapped (More options available. See page 3.) 120V: No mounting included
	FINISH	Aluminum: Black or Bronze texture (Standard) See page 3 for more powder coat options. Brass: Unfinished (Standard) See page 3 for more powder coat and acid treatment options.
	LISTINGS	ETL. IP65. CE



FOCUS INDUSTRIES INC.
25301 COMMERCENTRE DRIVE
LAKE FOREST, CA. 92630
949.830.1350 | TOLL FREE: 888.882.1350
WWW.FOCUSINDUSTRIES.COM

DESIGNED.
MANUFACTURED.
IN THE USA.





PL17S1 PATH LIGHT

PL17S1

PROJECT:

TYPE:

DATE: 10/1/2025

CATALOG NUMBER:

ACCESSORIES

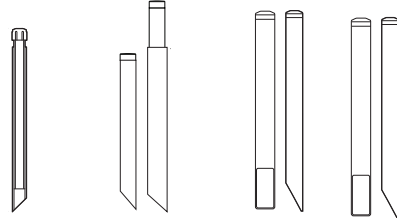
(Configure and order accessories separately) If ordering alternative mounting accessory, check (NS) No Stake box on page 1, to avoid double mounting accessories.

Stakes



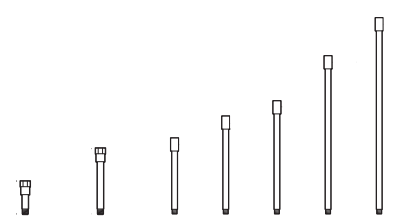
FA03 8.75" (12V)
FA03LG 8.875" (12V)
FA03RX 7.00" (12V)
FA032P 8.235" (12V)
FA033P 8.235" (12V)

Mounting Posts



FA01 15.00" (12V)
FA24MDCSTPOST 13.00" to 16.00" (12V)
FA25 20.00" (12V)
FA26 20.00" (120V-277V)

Extension Wands & Couplers



FA30-4 4.00"
FA30-8 8.00"
FA30 10.00"
FA31 13.00"
FA32 16.00"
FA33 21.00"
FA34 26.00"
(120V-277V)

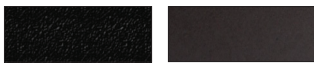
Canopies



FA24 3.00" dia. (12V)
FA24MDCST 2.65" dia. (12V)
FA24MDCSTPC 2.65" dia. (12V)
FA24LGSPUN 4.75" dia. (120V-277V)
FA24LGCST 4.75" dia. (120V-277V)
FA22CST 5.75" (120V-277V)

FINISHES

STANDARD FINISHES



Black Texture (-BLT)
Bronze Texture (-BRT)

PREMIUM FINISHES



CUSTOM FINISHES

Supply RAL or Pantone here

RAL #:

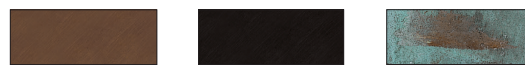
Need help finding a RAL color?
<https://www.ralcolor.com/>

PANTONE #:

Need help finding a Pantone color?
<https://www.pantone.com/color-finder>

ACID FINISHES

Brass and Copper fixtures only



Acid Rust Brass (-BAR)
Black Acid Treatment (-BAT)
Acid Verde Brass (-BAV)



IP65



landscape • architectural • hospitality • entertainment • illumination

FOCUS INDUSTRIES INC.
25301 COMMERCENTRE DRIVE
LAKE FOREST, CA. 92630
949.830.1350 | TOLL FREE: 888.882.1350
WWW.FOCUSINDUSTRIES.COM

DESIGNED.
MANUFACTURED.
IN THE USA.

