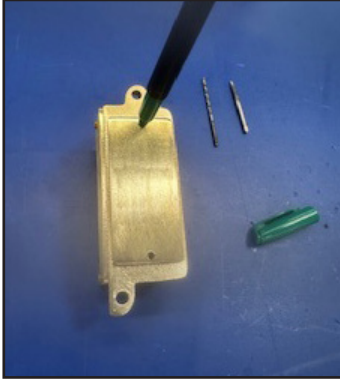
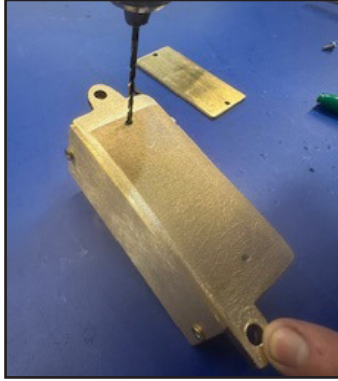


**INSTALLATION INSTRUCTIONS**

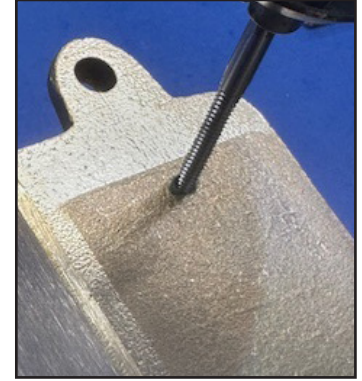
Adding a 1in or 2in tree strap to an existing FA111 tree jbox.

**STEP 1**

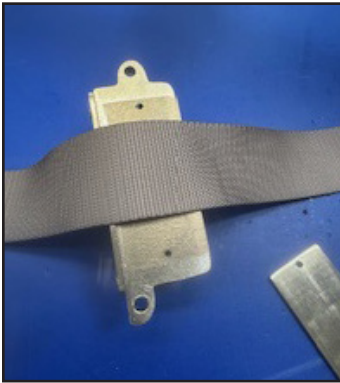
Place loose plate on the back of the tree jbox and mark the two mounting hole locations.

**STEP 2**

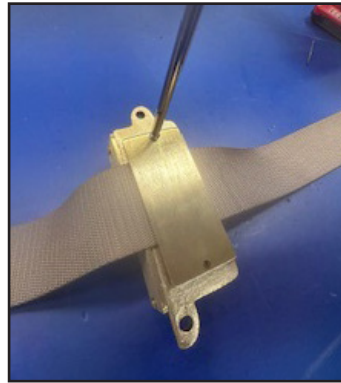
Drill both holes using a 7/64 drill bit for metal.

**STEP 3**

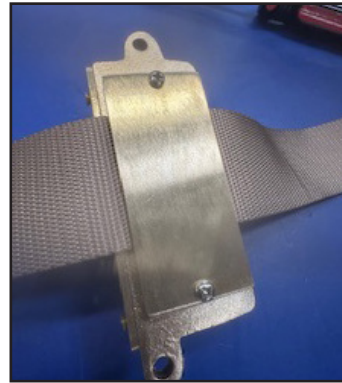
Using a 6-32 tap—tap both holes.

**STEP 4**

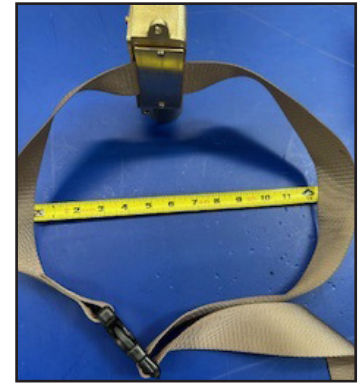
Lay 2in tree strap between the two tapped holes.

**STEP 5**

Using a Phillips #2 screw driver, screw the x2 6-32 machine screws, securing the plate the back of the jbox body.

**STEP 6**

Slide the tree strap so the buckle ends up on the opposite side of the jbox/fixture.

**STEP 7**

Tighten screws down. Excess strap material may be cut. Recommend to leave at least 6in of excess strap. Heat the cut end with a lighter to seal the material from fraying.