



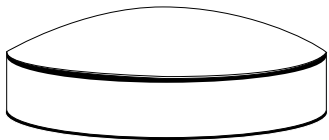
www.focusindustries.com



Shown: SL66LEDTBAR

Light Pod

SL66 Light Pod | Brass • Stainless Steel



The Focus Industries SL66 Light Pod is a versatile lighting solution available in brass or stainless steel, featuring a durable high-impact frosted acrylic lens. Powered by a 2-watt LED tape, it provides efficient illumination, making it ideal for docks, walls, post tops, and accent lighting applications. Its sleek design and robust materials ensure both functionality and style for various outdoor settings.



BRASS SL66 LIGHT POD

Beautiful Solid Brass side-lit rounded puck, the Light Pod, with its high impact frosted acrylic sides, emits a warm glow, or stunning color to set the mood of its surroundings, whether it be a dock, a stairwell, bar area, fence post, or wall area, it can add light in a subtle way—12 volt transformer required.



SL66LEDTBAR



SPECIFICATIONS: 3.5" Dia. Brass LED Surface Mount Pod Light

LENS: High Impact Frosted Acrylic

LED SUPPLIED: 2 Watt LED Tape 2700K / 147LM

SOCKET: None

WIRING: Black 6 foot 18/2 zip cord from base of fixture

For 25 foot 16/2 fixture lead wire add -25F to catalog number

FINISH: Brass - Unfinished, Brass - Acid Finish

POWDER COAT OPTIONS AVAILABLE (refer to back of Brochure)

*Powder coat and Acid finishes over Brass are custom and Non-Returnable

Color Options



Gel Strip

AMBER

RED

BLUE

GREEN

TO PLACE ORDERS – TOLL FREE (888)882.1350
ORDERS@FOCUSINDUSTRIES.COM

STAINLESS STEEL

SL66 LIGHT POD

Beautiful Solid Stainless Steel side-lit rounded puck, the Light Pod, with it's high impact frosted acrylic sides, emits a warm glow, or stunning color to set the mood of it's surroundings, whether it be a dock, a stairwell, bar area, fence post, or wall area, it can add light in a subtle way—12 volt transformer required.



SL66LEDTSS



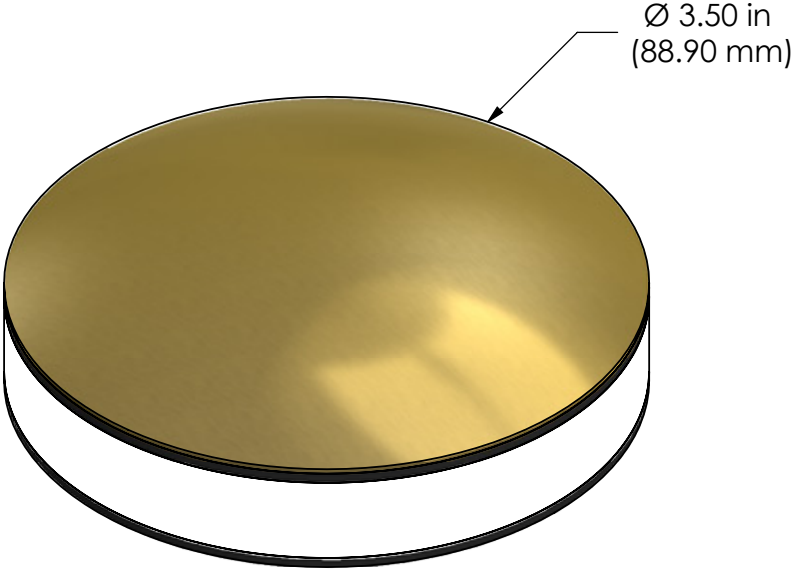
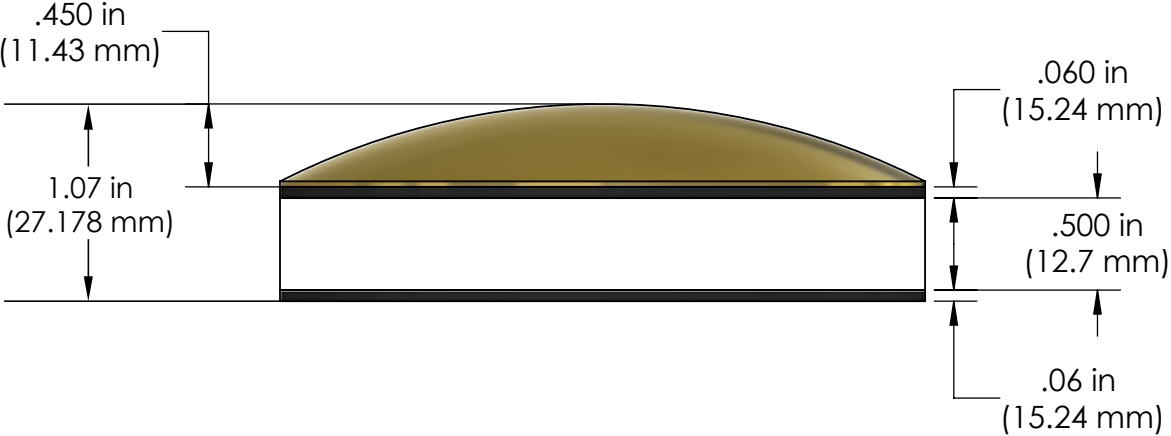
SPECIFICATIONS: 3.5" Dia. Stainless Steel LED Surface Mount Pod Light
LENS: High Impact Frosted Acrylic
LED SUPPLIED: 2 Watt LED Tape 2700K / 147LM
SOCKET: None
WIRING: Black 6 foot 18/2 zip cord from base of fixture
For 25 foot 16/2 fixture lead wire add -25F to catalog number
FINISH: Stainless Steel

POWDER COAT OPTIONS AVAILABLE (refer to back of Brochure)
*Powder coat and Acid finishes over Brass are custom and Non-Returnable

Color Options    
Gel Strip AMBER RED BLUE GREEN

TO PLACE ORDERS – TOLL FREE (888)882.1350
ORDERS@FOCUSINDUSTRIES.COM

DIMENSIONS





SL66LEDTBAT



SL66LEDTABAR
(Shown in Amber Color)

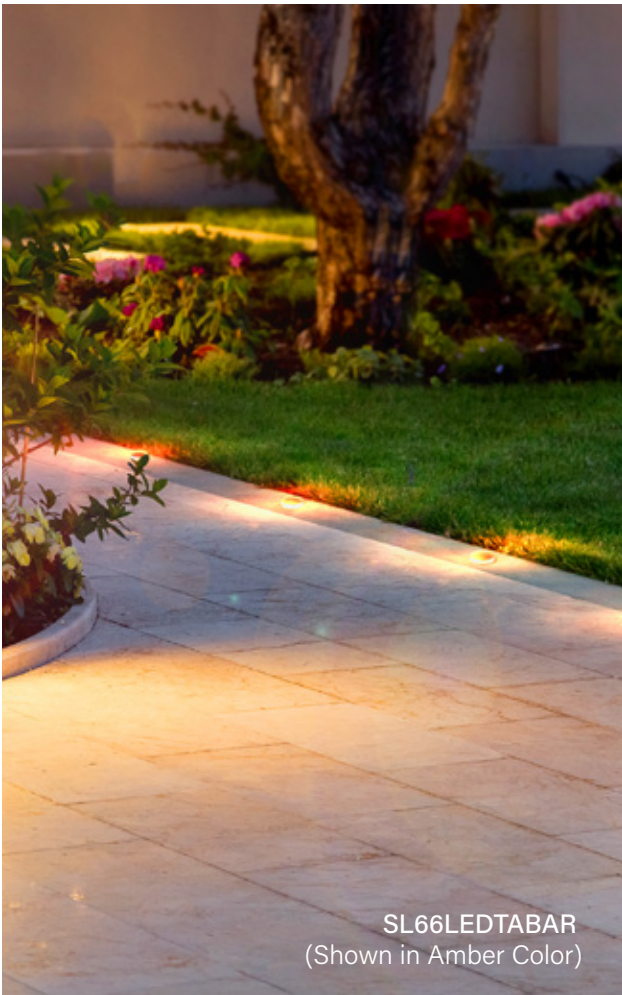
WE CAN DO COLOR OPTIONS

4 options of color gel strips can be added to give your 'Light Pod' a colorful upgrade.

(see back page for part numbers)



SL66LEDTABAT
(Shown in Amber Color)



SL66LEDTABAR
(Shown in Amber Color)



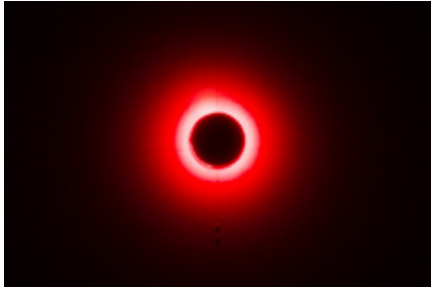
SL66LEDTABRS



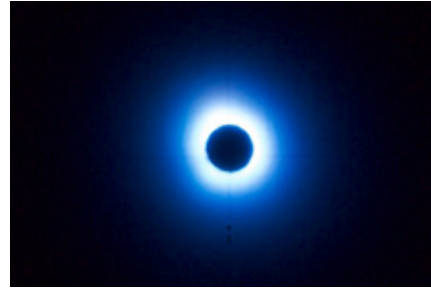
SL66LEDTRBKM
(Shown in Red Color)

Customize Your Color

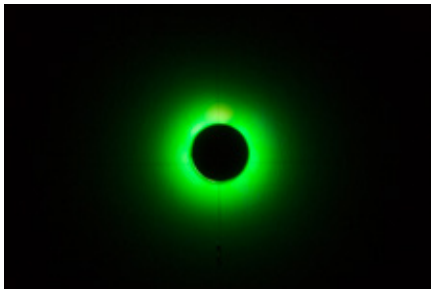
COLOR GEL STRIPS



-RED
(FA35SL66RED)



-BLUE
(FA35SL66BLUE)



-GREEN
(FA35SL66GREEN)



-AMBER
(FA35SL66AMBER)

STANDARD FINISHES



Black Texture
(-BLT)



Bronze Texture
(-BRT)

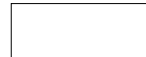
PREMIUM FINISHES



Dark Bronze
(-DBZ)



Black Magic
(-BKM)



White Gloss
(-WHT)



White Texture
(-WTX)



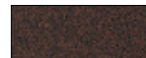
Stucco
(-STU)



Chrome Powder
(-CPR)



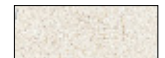
Weathered Iron
(-WIR)



Weathered Brown
(-WBR)



Rust
(-RST)



Luna
(-LUN)



Rubbed Verde
(-RBV)



Hunter Texture
(-HTX)

CUSTOM FINISHES (Supply RAL or Pantone here)

RAL #:

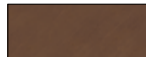
Need help finding a RAL color?
<https://www.ralcolor.com/>

PANTONE #:

Need help finding a Pantone color?
<https://www.pantone.com/color-finder>

ACID FINISHES

Brass and Copper fixtures only



Acid Rust
Copper (-CAR)
Brass (-BAR)



Black Acid Treatment
(-BAT)



Acid Verde
Copper (-CAV)
Brass (-BAV)

* Powder Coat Finishes over Brass are custom and **Non-Returnable**



SCAN FOR FULL SIZE
COLOR SWATCHES



DESIGNED.
MANUFACTURED.
IN THE USA

go green
led solutions