



[www.focusindustries.com](http://www.focusindustries.com)



# Turtle Friendly Lighting



Focus Industries Turtle Friendly Lighting and Fixtures

Focus Industries offers Turtle Friendly LEDs that emit amber or red light, which minimizes disruption to sea turtles and other nocturnal wildlife. As well as coastal friendly fixtures with lights that are designed for environmentally sensitive areas, ensuring effective illumination while supporting conservation efforts.



# We Are FOCUS INDUSTRIES

## About Turtle Friendly LED's

Focus Industries offers Turtle Friendly LED fixtures designed specifically to minimize the impact of artificial lighting on sea turtles and other wildlife. These LEDs emit light at wavelengths that are less disruptive to turtles, typically in the amber or red spectrum, which helps protect nesting sites and hatchlings. The fixtures are engineered for coastal areas, ensuring compliance with environmental regulations while providing reliable and durable lighting solutions. Focus Industries' Turtle Friendly products are ideal for beach front properties, conservation areas, and other sensitive environments where protecting wildlife is a priority.

## Stay connected with us

We love seeing how you have incorporated Focus products into the interior or exterior spaces of your project, home or business. Just like you, we love showing it off, and we would love to share your inspirational photos. Follow us on Facebook, Instagram, YouTube and LinkedIn for great helpful tips, new product releases, clearance items and all the latest happenings with Focus Industries.



#stayfocused

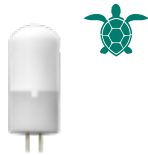




## PLUG N PLAY



**FLLEDOMNI3SSTF**  
3w Single Contact (L18)  
12-Volt



**FLLEDOMNI3SSBPTF**  
3w G4 Bi-Pin (L17)  
12-Volt



**FLLEDMMR16SS5W36TF**  
5w MR16 Super Saver (L40)  
12-Volt



**FLLEDMMR16SS1205W36TF**  
5w MR16 Super Saver (L119)  
120-Volt

## INTEGRATED



**RPLEDs2WTF**  
2w LED Strip  
12-Volt



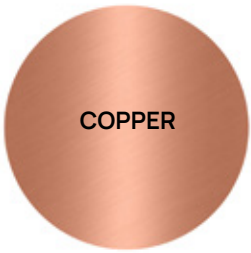
**RPLEDs4WTF**  
4w LED Strip  
12-Volt

LED TYPE		VOLTAGE	WATTAGE	CCT	Nano Meters	BASE	L#	HOURS
Omni3 Super Saver		12v	3w	Amber	585-595nm	Bi-Pin	L17	50,000
Omni3 Super Saver		12v	3w	Amber	585-595nm	Single Contact	L18	50,000
MR16 Super Saver		12v	5w	Amber	585-595nm	Bi-Pin	L40	40,000
MR16 Super Saver		120v	5w	Amber	585-595nm	GU10	L119	40,000
LED Strip		12v	2w	Amber	585-595nm	None (Strip)	LEDs2WTF	50,000
LED Strip		12v	4w	Amber	585-595nm	None (Strip)	LEDs4WTF	50,000

(TF) Indicates turtle friendly light source. Emitting a subtle amber glow.

## MATERIALS

Focus Industries offers a range of coastal materials, including brass, copper, stainless steel, and composite, specifically designed to withstand the harsh elements of coastal environments. These durable materials provide superior resistance to corrosion from salt air, moisture, and UV exposure, ensuring long-lasting performance. Brass and copper add a timeless aesthetic with natural patinas, while stainless steel offers a sleek, modern look with excellent durability. Composite materials provide a versatile and cost-effective alternative that resists fading, chipping, and cracking, making Focus Industries' fixtures ideal for both function and style in coastal applications.



# Turtle Friendly Lighting

12v



## AL01L17BRS

Size: 13.50" x 5.50" dia.  
Material: Brass  
Material Options: N/A  
LED: 3w Omni SS LED BP (L17)  
CCT: AMBER  
Nano Meter: 585-595nm  
LED Option: 3w Omni TF (L18)

● BRS



## AL04L17BRS

Size: 15.75" x 7.50" dia.  
Material: Brass  
Material Options: N/A  
LED: 3w Omni SS LED BP (L17)  
CCT: AMBER  
Nano Meter: 585-595nm  
LED Option: 3w Omni TF (L18)

● BRS



## AL05L17BAR

Size: 19.00" x 10.00" dia.  
Material: Brass  
Material Options: N/A  
LED: 3w Omni SS LED BP (L17)  
CCT: AMBER  
Nano Meter: 585-595nm  
LED Option: 3w Omni TF (L18)

● BRS



## AL06SML17BRS

Size: 12.00" x 3.75" dia.  
Material: Brass  
Material Options: N/A  
LED: 3w Omni SS LED BP (L17)  
CCT: AMBER  
Nano Meter: 585-595nm  
LED Option: 3w Omni TF (L18)

● BRS



## AL08DML17BRS

Size: Deck Mount 31.00" x 3.00" dia.  
Material: ABS  
Material Options: Brass/Copper  
LED: 3w Omni SS LED BP TF (L17)  
CCT: AMBER  
Nano Meter: 585-595nm  
LED Option: 3w Omni TF (L18)

● ABS ● BRS  
● COP



## AL12L17BRS

Size: 24.00" x 8.00" dia.  
Material: Brass  
Material Options: N/A  
LED: 3w Omni SS LED BP TF (L17)  
CCT: AMBER  
Nano Meter: 585-595nm  
LED Option: 3w Omni TF (L18)

● BRS



## AL15L17BRS

Size: 19.00" x 8.00" dia.  
Material: Brass  
Material Options: N/A  
LED: 3w Omni SS LED BP TF (L17)  
CCT: AMBER  
Nano Meter: 585-595nm  
LED Option: 3w Omni TF (L18)

● BRS



## AL17L17BRS

Size: 19.25" x 8.00" dia.  
Material: Brass  
Material Options: N/A  
LED: 3w Omni SS LED BP TF (L17)  
CCT: AMBER  
Nano Meter: 585-595nm  
LED Option: 3w Omni TF (L18)

● BRS

## OMNI-3G2 TURTLE FRIENDLY LIGHT SOURCES FOR USE IN ALL MANUFACTURERS S.C. & B.P. LIGHT FIXTURES



FLLEDOMNI3SSTF  
12-Volt



FLLEDOMNI3SSBPTF  
12-Volt

- Long Life - 50,000 Hours L7 Average Rating (rated life to 70% initial light output)
- High Power LED Light Source
- 180 Lumens
- 585nm - 595nm Amber (Turtle Friendly)
- No UV or IR
- Wide Input Voltage Range of 9v - 20v
- Dimmable
- DOE LM79 Tested
- Power Factor >90%
- 5 Year Limited Warranty
- RoHS Compliant - Energy Efficient - Environmentally Friendly
- Water Resistant & Vibration Resistant
- No Glass or Fragile Parts
- Must be powered by a magnetic transformer



#### AL17SM2L17BRS

Size: 13.00" x 5.50" dia.  
Material: Brass  
Material Options: N/A  
LED: 3w Omni SS LED BP TF (L17)  
CCT: AMBER  
Nano Meter: 585-595nm  
LED Option: 3w Omni TF (L18)

● BRS



#### RXA01L17BRS

Size: 20.50" x 6.00" dia.  
Material: Brass  
Material Options: N/A  
LED: 3w Omni SS LED BP TF (L17)  
CCT: AMBER  
Nano Meter: 585-595nm  
LED Option: 3w Omni TF (L18)

● BRS



#### RXA01FL17COP

Size: 17.00" x 6.00" dia.  
Material: Copper  
Material Options: Brass/SS  
LED: 3w Omni SS LED BP TF (L17)  
CCT: AMBER  
Nano Meter: 585-595nm  
LED Option: 3w Omni TF (L18)

● BRS  
● COP ● SS



#### AL18LGAHL18COP

Size: 77.00" x 7.00" dia.  
Material: Copper  
Material Options: N/A  
LED: 3w Omni SS LED TF (L18)  
CCT: AMBER  
Nano Meter: 585-595nm  
Fuel Source: Kerosene/Citronella  
LED Option: 3w Omni SS LED BP TF (L17)

● COP



#### AL18LGHSBL18BAT

Size: 77.00" x 7.00" dia.  
Material: Copper  
Material Options: N/A  
LED: 3w Omni SS LED (L12)  
CCT: 3000K  
Lumens: 300lm  
Fuel Source: Kerosene/Citronella  
LED Option: 3w Omni SS LED BP TF (L17)

● COP



#### DL04L17BLT

Size: 9.50" x 4.00" x 3.50"  
Material: Brass  
Material Options: Stainless Steel  
LED: 3w Omni SS LED BP TF (L17)  
CCT: AMBER  
Nano Meter: 585-595nm  
LED Option: 3w Omni TF (L18)

● BRS  
● SS



#### DL08L17BLT

Size: 10.50" x 5.13" dia.  
Material: Brass  
Material Options: N/A  
LED: 3w Omni SS LED BP TF (L17)  
CCT: AMBER  
Nano Meter: 585-595nm  
LED Option: 3w Omni TF (L18)

● BRS



#### DL09L17BLT

Size: 10.50" x 5.50" dia.  
Material: Brass  
Material Options: N/A  
LED: 3w Omni SS LED BP TF (L17)  
CCT: AMBER  
Nano Meter: 585-595nm  
LED Option: 3w Omni TF (L18)

● BRS

## OMNI-3G2 TURTLE FRIENDLY LIGHT SOURCES FOR USE IN ALL MANUFACTURERS S.C. & B.P. LIGHT FIXTURES



FLLEDOMNI3SSTF  
12-Volt



FLLEDOMNI3SSBPTF  
12-Volt

- Long Life - 50,000 Hours L7 Average Rating (rated life to 70% initial light output)
- High Power LED Light Source
- 180 Lumens
- 585nm - 595nm Amber (Turtle Friendly)
- No UV or IR
- Wide Input Voltage Range of 9v - 20v
- Dimmable
- DOE LM79 Tested
- Power Factor >90%
- 5 Year Limited Warranty
- RoHS Compliant - Energy Efficient - Environmentally Friendly
- Water Resistant & Vibration Resistant
- No Glass or Fragile Parts
- Must be powered by a magnetic transformer



# Turtle Friendly Lighting

12v



## PL01L17BRS

Size: 19.00" x 5.50" dia.  
Material: Brass  
Material Options: N/A  
LED: 3w Omni SS LED BP (L17)  
CCT: AMBER  
Nano Meter: 585-595nm  
LED Option: 3w Omni TF (L18)

● BRS



## PL02L17BRS

Size: 22.00" x 4.50" dia.  
Material: Brass  
Material Options: Copper  
LED: 3w Omni SS LED BP (L17)  
CCT: AMBER  
Nano Meter: 585-595nm  
LED Option: 3w Omni TF (L18)

● BRS  
● COP



## PL04L17BRS

Size: 22.00" x 4.50" dia.  
Material: Brass  
Material Options: N/A  
LED: 3w Omni SS LED BP (L17)  
CCT: AMBER  
Nano Meter: 585-595nm  
LED Option: 3w Omni TF (L18)

● BRS



## PL04LVSL17BRS

Size: 22.00" x 4.50" dia.  
Material: Brass  
Material Options: N/A  
LED: 3w Omni SS LED BP (L17)  
CCT: AMBER  
Nano Meter: 585-595nm  
LED Option: 3w Omni TF (L18)

● BRS



## PL05L17BRS

Size: 19.00" x 5.50" dia.  
Material: Brass  
Material Options: N/A  
LED: 3w Omni SS LED BP (L17)  
CCT: AMBER  
Nano Meter: 585-595nm  
LED Option: 3w Omni TF (L18)

● BRS



## PL07L17BRS

Size: 33.00" x 3.00" dia.  
Material: Brass  
Material Options: ABS/Cop  
LED: 3w Omni SS LED BP (L17)  
CCT: AMBER  
Nano Meter: 585-595nm  
LED Option: 3w Omni TF (L18)

● ABS ● BRS  
● COP



## PL07LGDML17BRS

Size: 49.00" x 4.50" dia.  
Material: Brass  
Material Options: ABS  
LED: 3w Omni SS LED BP (L17)  
CCT: AMBER  
Nano Meter: 585-595nm  
LED Option: 3w Omni TF (L18)

● ABS ● BRS



## PL11L17BRS

Size: 24.00" x 8.00" dia.  
Material: Brass  
Material Options: N/A  
LED: 3w Omni SS LED BP (L17)  
CCT: AMBER  
Nano Meter: 585-595nm  
LED Option: 3w Omni TF (L18)

● BRS

## OMNI-3G2 TURTLE FRIENDLY LIGHT SOURCES FOR USE IN ALL MANUFACTURERS S.C. & B.P. LIGHT FIXTURES



FLLEDOMNI3SSTF  
12-Volt



FLLEDOMNI3SSBPTF  
12-Volt

- Long Life - 50,000 Hours L7 Average Rating (rated life to 70% initial light output)
- High Power LED Light Source
- 180 Lumens
- 585nm - 595nm Amber (Turtle Friendly)
- No UV or IR
- Wide Input Voltage Range of 9v - 20v
- Dimmable
- DOE LM79 Tested
- Power Factor >90%
- 5 Year Limited Warranty
- RoHS Compliant - Energy Efficient - Environmentally Friendly
- Water Resistant & Vibration Resistant
- No Glass or Fragile Parts
- Must be powered by a magnetic transformer

**PL14L17BRS**

Size: 14.00" x 5.25" x 5.25"  
Material: Brass  
Material Options: N/A  
LED: 3w Omni SS LED BP (L17)  
CCT: AMBER  
Nano Meter: 585-595nm  
LED Option: 3w Omni TF (L18)

● BRS

**PL17S1L17BRS**

Size: 20.00" x 1.00" x 1.00"  
Material: Brass  
Material Options: N/A  
LED: 3w Omni SS LED BP (L17)  
CCT: AMBER  
Nano Meter: 585-595nm  
LED Option: 3w Omni TF (L18)

● BRS

**PL17L17BRS**

Size: 20.25" x 1.00" x 2.00"  
Material: Brass  
Material Options: N/A  
LED: 3w Omni SS LED BP (L17)  
CCT: AMBER  
Nano Meter: 585-595nm  
LED Option: 3w Omni TF (L18)

● BRS

**PL19L17BRS**

Size: 22.00" x 5.50" dia.  
Material: Brass  
Material Options: N/A  
LED: 3w Omni SS LED BP (L17)  
CCT: AMBER  
Nano Meter: 585-595nm  
LED Option: 3w Omni TF (L18)

● BRS

**PL20L17BRS**

Size: 20.00" x 5.75" dia.  
Material: Brass  
Material Options: N/A  
LED: 3w Omni SS LED BP (L17)  
CCT: AMBER  
Nano Meter: 585-595nm  
LED Option: 3w Omni TF (L18)

● BRS

**PL21L17BRS**

Size: 20.50" x 5.75" dia.  
Material: Brass  
Material Options: N/A  
LED: 3w Omni SS LED BP (L17)  
CCT: AMBER  
Nano Meter: 585-595nm  
LED Option: 3w Omni TF (L18)

● BRS

**AL08SMDML12COP**

Size: 16.00" x 1.75" dia.  
Material: Copper  
Material Options: N/A  
LED: 3w Omni SS LED BP (L17)  
CCT: AMBER  
Nano Meter: 585-595nm  
LED Option: 3w Omni TF (L18)

● COP



Deck Mount  
Size: 42.00" x 4.50" dia.



Angle Cut Bottom

## OMNI-3G2 TURTLE FRIENDLY LIGHT SOURCES FOR USE IN ALL MANUFACTURERS S.C. & B.P. LIGHT FIXTURES



FLLEDOMNI3SSTF  
12-Volt



FLLEDOMNI3SSBPTF  
12-Volt

- Long Life - 50,000 Hours L7 Average Rating (rated life to 70% initial light output)
- High Power LED Light Source
- 180 Lumens
- 585nm - 595nm Amber (Turtle Friendly)
- No UV or IR
- Wide Input Voltage Range of 9v - 20v
- Dimmable
- DOE LM79 Tested
- Power Factor >90%
- 5 Year Limited Warranty
- RoHS Compliant - Energy Efficient - Environmentally Friendly
- Water Resistant & Vibration Resistant
- No Glass or Fragile Parts
- Must be powered by a magnetic transformer



# Turtle Friendly Lighting

12v



## PL22DML17BRS

Size: 18.00" x 2.25" x 2.25"  
Material: Brass  
Material Options: N/A  
LED: 3w Omni SS LED BP (L17)  
CCT: AMBER  
Nano Meter: 585-595nm  
LED Option: 3w Omni TF (L18)

● BRS



## PL22L17BRS

Size: 28.00" x 2.25" x 2.25"  
Material: Brass  
Material Options: N/A  
LED: 3w Omni SS LED BP (L17)  
CCT: AMBER  
Nano Meter: 585-595nm  
LED Option: 3w Omni TF (L18)

● BRS



## PL23DM18L17BRS

Size: 18.00"/ 24.00" x 2.25" x 2.25"  
Material: Brass  
Material Options: N/A  
LED: 3w Omni SS LED BP (L17)  
CCT: AMBER  
Nano Meter: 585-595nm  
LED Option: 3w Omni TF (L18)

● BRS



## PL2328L17BRS

Size: 28.00"/ 34.00" x 2.25" x 2.25"  
Material: Brass  
Material Options: N/A  
LED: 3w Omni SS LED BP (L17)  
CCT: AMBER  
Nano Meter: 585-595nm  
LED Option: 3w Omni TF (L18)

● BRS



(PL24182)

## PL2418L17BRSBRT

Size: 52.00" x 2.00" x 4.00"  
Fixture Material: Brass  
Fixture Material Options: N/A  
Post Material: Galvanized Steel  
LED: 3w Omni SS LED BP (L17)  
CCT: AMBER  
Nano Meter: 585-595nm  
LED Option: 3w Omni TF (L18)

● BRS



(PL24072)

## PL2407L17SSBRT

Size: 24.00" x 4.00" x 4.00"  
Fixture Material: Stainless Steel  
Fixture Material Options: Brass/SS  
Post Material: Galvanized Steel  
LED: 3w Omni SS LED BP (L17)  
CCT: AMBER  
Nano Meter: 585-595nm  
LED Option: 3w Omni TF (L18)

● BRS ● SS



## SL05L17BRS

Size: 4.75" x 4.50" dia.  
Material: Brass  
Material Options: Copper  
LED: 3w Omni SS LED BP (L17)  
CCT: AMBER  
Nano Meter: 585-595nm  
LED Option: 3w Omni TF (L18)  
12" Brass Chain

● BRS

● COP



## SL06L17BRS

Size: 4.75" x 4.50" dia.  
Material: Brass  
Material Options: N/A  
LED: 3w Omni SS LED BP (L17)  
CCT: AMBER  
Nano Meter: 585-595nm  
LED Option: 3w Omni TF (L18)  
12" Brass Chain

● BRS

## OMNI-3G2 TURTLE FRIENDLY LIGHT SOURCES FOR USE IN ALL MANUFACTURERS S.C. & B.P. LIGHT FIXTURES



FLLEDOMNI3SSTF  
12-Volt



FLLEDOMNI3SSBPTF  
12-Volt

- Long Life - 50,000 Hours L7 Average Rating (rated life to 70% initial light output)
- High Power LED Light Source
- 180 Lumens
- 585nm - 595nm Amber (Turtle Friendly)
- No UV or IR
- Wide Input Voltage Range of 9v - 20v
- Dimmable
- DOE LM79 Tested
- Power Factor >90%
- 5 Year Limited Warranty
- RoHS Compliant - Energy Efficient - Environmentally Friendly
- Water Resistant & Vibration Resistant
- No Glass or Fragile Parts
- Must be powered by a magnetic transformer



#### SL14L17BRS

Size: 5.90" x 2.50" dia.  
Material: Brass  
Material Options: Copper  
Material Cap Options: Brass Only  
LED: 3w Omni SS LED BP (L17)  
CCT: AMBER  
Nano Meter: 585-595nm  
LED Option: 3w Omni TF (L18)  
18" Brass Chain

● BRS  
● COP



#### SL15LW4CSML17COP

Size: 4.00" x 2.50" dia.  
Material: Copper  
Material Options: Brass  
Material Cap Option: Copper Only  
LED: 3w Omni SS LED BP (L17)  
CCT: AMBER  
Nano Meter: 585-595nm  
LED Option: 3w Omni TF (L18)  
18" Brass Chain

● BRS  
● COP



#### SL15LW10CSML17COP

Size: 10.00" x 2.50" dia.  
Material: Copper  
Material Options: Brass  
Material Cap Options: Copper Only  
LED: 3w Omni SS LED BP (L17)  
CCT: AMBER  
Nano Meter: 585-595nm  
LED Option: 3w Omni TF (L18)  
18" Brass Chain

● BRS  
● COP



#### SL15L17BRS

Size: 4.00" x 2.50" dia.  
Material: Brass  
Material Options: Copper  
Material Cap Options: Brass Only  
LED: 3w Omni SS LED BP (L17)  
CCT: AMBER  
Nano Meter: 585-595nm  
LED Option: 3w Omni TF (L18)  
18" Brass Chain

● BRS  
● COP



#### SL1510CSML17BRS

Size: 10.00" x 2.50" dia.  
Material: Brass  
Material Options: Copper  
Material Cap Options: Brass Only  
LED: 3w Omni SS LED BP (L17)  
CCT: AMBER  
Nano Meter: 585-595nm  
LED Option: 3w Omni TF (L18)  
18" Brass Chain

● BRS  
● COP



#### SL15S2L17BRS

Size: 5.25" x 2.50" dia.  
Material: Brass  
Material Options: Copper  
Material Cap Options: Brass Only  
LED: 3w Omni SS LED BP (L17)  
CCT: AMBER  
Nano Meter: 585-595nm  
LED Option: 3w Omni TF (L18)  
18" Brass Chain

● BRS  
● COP



#### SL15S2L17COP

Size: 4.50" x 2.50" dia.  
Material: Copper  
Material Options: Brass  
Material Cap Options: Copper Only  
LED: 3w Omni SS LED BP (L17)  
CCT: AMBER  
Nano Meter: 585-595nm  
LED Option: 3w Omni TF (L18)  
18" Brass Chain

● BRS  
● COP

## OMNI-3G2 TURTLE FRIENDLY LIGHT SOURCES FOR USE IN ALL MANUFACTURERS S.C. & B.P. LIGHT FIXTURES



FLLEDOMNI3SSTF  
12-Volt



FLLEDOMNI3SSBPTF  
12-Volt

- Long Life - 50,000 Hours L7 Average Rating (rated life to 70% initial light output)
- High Power LED Light Source
- 180 Lumens
- 585nm - 595nm Amber (Turtle Friendly)
- No UV or IR
- Wide Input Voltage Range of 9v - 20v
- Dimmable
- DOE LM79 Tested
- Power Factor >90%
- 5 Year Limited Warranty
- RoHS Compliant - Energy Efficient - Environmentally Friendly
- Water Resistant & Vibration Resistant
- No Glass or Fragile Parts
- Must be powered by a magnetic transformer



# Turtle Friendly Lighting

12v / 120v



## AL08MDDML40BRS

Size: 18.00" x 2.50" dia.  
Material: Brass  
Material Option: N/A  
LED: 5w MR16 SS LED BP (L40)  
CCT: AMBER  
Nano Meter: 585-595nm  
120v Option: 5w MR16 SS LED TF (L119)

● BRS



## AL08LGDML40BRS

Size: 24.00" x 3.00" dia.  
Material: Brass  
Material Option: N/A  
LED: 5w MR16 SS LED BP (L40)  
CCT: AMBER  
Nano Meter: 585-595nm  
120v Option: 5w MR16 SS LED TF (L119)

● BRS



## AL05CP36MRL40BRS

Size: 24.00/36.00" x 7.50" dia.  
Material: Brass  
Material Option: N/A  
LED: 5w MR16 SS LED BP (L40)  
CCT: AMBER  
Nano Meter: 585-595nm  
120v Option: 5w MR16 SS LED TF (L119)

● BRS



## AL12CP36MRL40BRS

Size: 24.00/36.00" x 5.50" dia.  
Material: Brass  
Material Option: N/A  
LED: 5w MR16 SS LED BP (L40)  
CCT: AMBER  
Nano Meter: 585-595nm  
120v Option: 5w MR16 SS LED TF (L119)

● BRS



## AL15CP36MRL40BRS

Size: 24.00/36.00" x 8.00" dia.  
Material: Brass  
Material Option: N/A  
LED: 5w MR16 SS LED BP (L40)  
CCT: AMBER  
Nano Meter: 585-595nm  
120v Option: 5w MR16 SS LED TF (L119)

● BRS



## AL17CP36MRL40BRS

Size: 24.00/36.00" x 8.00" dia.  
Material: Brass  
Material Option: N/A  
LED: 5w MR16 SS LED BP (L40)  
CCT: AMBER  
Nano Meter: 585-595nm  
120v Option: 5w MR16 SS LED TF (L119)

● BRS



## DL20ACL40BRS

Size: 8.50" x 3.50" dia.  
Material: Brass  
Material Option: Composite  
LED: 5w MR16 SS LED BP (L40)  
CCT: AMBER  
Nano Meter: 585-595nm  
120v Option: 5w MR16 SS LED TF (L119)

● BRS  
● COMP



## DL20ECL40BLT

Size: 6.00" x 3.50" dia.  
Material: Brass  
Material Option: Composite  
LED: 5w MR16 SS LED BP (L40)  
CCT: AMBER  
Nano Meter: 585-595nm  
120v Option: 5w MR16 SS LED TF (L119)

● BRS  
● COMP

## ARROW MR16 TURTLE FRIENDLY LIGHT SOURCES FOR USE IN ALL MANUFACTURERS MR16 LIGHT FIXTURES



FLLEDMR16SS5W36TF  
12-Volt



FLLEDMR16SS120V5W36TF  
120-Volt

- Long Life - 40,000 Hours L7 Average Rating (rated life to 70% initial light output)
- 1700K-1850K Amber (Turtle Friendly)
- 150 Lumens (5w)
- 585nm - 595nm Amber (Turtle Friendly)
- No UV or IR
- Wide Input Voltage Range of 9v - 15v
- Dimmable
- DOE LM79 Tested
- Power Factor >90%
- 5 Year Limited Warranty
- RoHS Compliant - Energy Efficient - Environmentally Friendly
- Water Resistant & Vibration Resistant
- No Glass or Fragile Parts
- Must be powered by a magnetic transformer



#### DL22L40SS

Size: 5.00" x 2.50" dia.  
Material: Stainless Steel  
Material Option: N/A  
LED: 5w MR16 SS LED BP (L40)  
CCT: AMBER  
Nano Meter: 585-595nm  
120v Option: 5w MR16 SS LED TF (L119)

● SS



#### DL22CWML40COP

Size: 5.00" x 2.375" dia.  
Material: Copper  
Material Option: Composite  
LED: 5w MR16 SS LED BP (L40)  
CCT: AMBER  
Nano Meter: 585-595nm  
120v Option: 5w MR16 SS LED TF (L119)  
Fixture Option: 2 fixture available (CWM2)

● COP



#### DL38ACL40BRS

Size: 16.00" x 5.50" dia.  
Material: Brass  
Material Option: Composite  
LED: 5w MR16 SS LED BP (L40)  
CCT: AMBER  
Nano Meter: 585-595nm  
120v Option: 5w MR16 SS LED TF (L119)

● BRS

● COMP

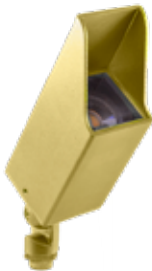


#### DL38ECL40BLT

Size: 9.125" x 5.50" dia.  
Material: Brass  
Material Option: Composite  
LED: 5w MR16 SS LED BP (L40)  
CCT: AMBER  
Nano Meter: 585-595nm  
120v Option: 5w MR16 SS LED TF (L119)

● BRS

● COMP



#### DL44L40BLT

Size: 4.50" x 2.25"  
Material: Brass  
Material Options: N/A  
LED: 5w MR16 SS LED BP (L40)  
CCT: AMBER  
Nano Meter: 585-595nm  
120v Option: 5w MR16 SS LED TF (L119)

● BRS



#### RXD01L40BRS

Size: 5.00" x 2.50" dia.  
Material: Brass  
Material Options: N/A  
LED: 5w MR16 SS LED BP (L40)  
CCT: AMBER  
Nano Meter: 585-595nm  
120v Option: 5w MR16 SS LED TF (L119)

● BRS



#### RXD08L40BRS

Size: 4.25" x 2.25" dia.  
Material: Brass  
Material Options: N/A  
LED: 5w MR16 SS LED BP (L40)  
CCT: AMBER  
Nano Meter: 585-595nm  
120v Option: 5w MR16 SS LED TF (L119)

● BRS



#### RXD08TACL40BRS

Size: 5.50" x 2.25" dia.  
Material: Brass  
Material Options: Brass  
LED: 5w MR16 SS LED BP (L40)  
CCT: AMBER  
Nano Meter: 585-595nm  
120v Option: 5w MR16 SS LED TF (L119)

● BRS

## ARROW MR16 TURTLE FRIENDLY LIGHT SOURCES FOR USE IN ALL MANUFACTURERS MR16 LIGHT FIXTURES



FLLEDMR16SS5W36TF  
12-Volt



FLLEDMR16SS120V5W36TF  
120-Volt

- Long Life - 40,000 Hours L7 Average Rating (rated life to 70% initial light output)
- 1700K-1850K Amber (Turtle Friendly)
- 150 Lumens (5w)
- 585nm - 595nm Amber (Turtle Friendly)
- No UV or IR
- Wide Input Voltage Range of 9v - 15v
- Dimmable
- DOE LM79 Tested
- Power Factor >90%
- 5 Year Limited Warranty
- RoHS Compliant - Energy Efficient - Environmentally Friendly
- Water Resistant & Vibration Resistant
- No Glass or Fragile Parts
- Must be powered by a magnetic transformer



# Turtle Friendly Lighting

12v / 120v



## PL23S1WDM18L40BRS

Size: 18.00"/24.00" x 2.25" x 2.25"

Material: Brass

Material Options: N/A

LED: 5w MR16 SS LED BP (L40)

CCT: AMBER

Nano Meter: 585-595nm

120v Option: 5w MR16 SS LED TF (L119)

Windows: 1

● BRS



## PL23S2WDM18L40BRS

Size: 18.00"/24.00" x 2.25" x 2.25"

Material: Brass

Material Options: N/A

LED: 5w MR16 SS LED BP (L40)

CCT: AMBER

Nano Meter: 585-595nm

120v Option: 5w MR16 SS LED TF (L119)

Windows: 2

● BRS



## PL23S3WDM18L40BRS

Size: 18.00"/24.00" x 2.25" x 2.25"

Material: Brass

Material Options: N/A

LED: 5w MR16 SS LED BP (L40)

CCT: AMBER

Nano Meter: 585-595nm

120v Option: 5w MR16 SS LED TF (L119)

Windows: 3

● BRS



## PL23S4WDM18L40BRS

Size: 18.00"/24.00" x 2.25" x 2.25"

Material: Brass

Material Options: N/A

LED: 5w MR16 SS LED BP (L40)

CCT: AMBER

Nano Meter: 585-595nm

120v Option: 5w MR16 SS LED TF (L119)

Windows: 4

● BRS



## PL23LGS1WDM24L40BRS

Size: 24.00" x 4.00" x 4.00"

Material: Brass

Material Options: N/A

LED: 5w MR16 SS LED BP (L40)

CCT: AMBER

Nano Meter: 585-595nm

120v Option: 5w MR16 SS LED TF (L119)

Windows: 1

Size Options: 30.00"/36.00"

● BRS



## PL23LGS2WDM24L40BRS

Size: 24.00" x 4.00" x 4.00"

Material: Brass

Material Options: N/A

LED: 5w MR16 SS LED BP (L40)

CCT: AMBER

Nano Meter: 585-595nm

120v Option: 5w MR16 SS LED TF (L119)

Windows: 2

Size Options: 30.00"/36.00"

● BRS



## PL23LGS3WDM24L40BRS

Size: 24.00" x 4.00" x 4.00"

Material: Brass

Material Options: N/A

LED: 5w MR16 SS LED BP (L40)

CCT: AMBER

Nano Meter: 585-595nm

120v Option: 5w MR16 SS LED TF (L119)

Windows: 3

Size Options: 30.00"/36.00"

● BRS



## PL23LGS4WDM24L40BRS

Size: 24.00" x 4.00" x 4.00"

Material: Brass

Material Options: N/A

LED: 5w MR16 SS LED BP (L40)

CCT: AMBER

Nano Meter: 585-595nm

120v Option: 5w MR16 SS LED TF (L119)

Windows: 4

Size Options: 30.00"/36.00"

● BRS

## ARROW MR16 TURTLE FRIENDLY LIGHT SOURCES FOR USE IN ALL MANUFACTURERS MR16 LIGHT FIXTURES



FLLEDMR16SS5W36TF  
12-Volt



FLLEDMR16SS120V5W36TF  
120-Volt

- Long Life - 40,000 Hours L7 Average Rating (rated life to 70% initial light output)
- 1700K-1850K Amber (Turtle Friendly)
- 150 Lumens (5w)
- 585nm - 595nm Amber (Turtle Friendly)
- No UV or IR
- Wide Input Voltage Range of 9v - 15v
- Dimmable
- DOE LM79 Tested
- Power Factor >90%
- 5 Year Limited Warranty
- RoHS Compliant - Energy Efficient - Environmentally Friendly
- Water Resistant & Vibration Resistant
- No Glass or Fragile Parts
- Must be powered by a magnetic transformer



#### PL26DMCD001L40BAR

Size: 24.00" x 2.25" x 2.25"  
Material: Brass  
Material Options: N/A  
LED: 5w MR16 SS LED BP (L40)  
CCT: AMBER  
Nano Meter: 585-595nm  
120v Option: 5w MR16 SS LED TF (L119)

● BRS



#### PL26LGDMCD01830L40BAR

Size: 24.00" x 4.00" x 4.00"  
Material: Brass  
Material Options: N/A  
LED: 5w MR16 SS LED BP (L40)  
CCT: AMBER  
Nano Meter: 585-595nm  
120v Option: 5w MR16 SS LED TF (L119)  
Angle Top Option: Aluminum Only  
Size Options: 30.00"/36.00"

● BRS



#### RXP03L40BRS

Size: 25.00" x 2.25" dia.  
Material: Brass  
Material Options: N/A  
LED: 5w MR16 SS LED BP (L40)  
CCT: AMBER  
Nano Meter: 585-595nm  
120v Option: 5w MR16 SS LED TF (L119)

● BRS



#### RXP03TACL40BRS

Size: 26.00" x 2.25" dia.  
Material: Brass  
Material Options: N/A  
LED: 5w MR16 SS LED BP (L40)  
CCT: AMBER  
Nano Meter: 585-595nm  
120v Option: 5w MR16 SS LED TF (L119)

● BRS



#### RXP04L40BRS

Size: 25.00" x 2.25" dia.  
Material: Brass  
Material Options: N/A  
LED: 5w MR16 SS LED BP (L40)  
CCT: AMBER  
Nano Meter: 585-595nm  
120v Option: 5w MR16 SS LED TF (L119)

● BRS



#### RXP04TACL40BRS

Size: 25.00" x 2.25" dia.  
Material: Brass  
Material Options: N/A  
LED: 5w MR16 SS LED BP (L40)  
CCT: AMBER  
Nano Meter: 585-595nm  
120v Option: 5w MR16 SS LED TF (L119)

● BRS



#### PGL05L40BRS

Size: 4.75" x 3.375" dia.  
Material: Brass  
Material Options: N/A  
LED: 5w MR16 SS LED BP (L40)  
CCT: AMBER  
Nano Meter: 585-595nm  
120v Option: 5w MR16 SS LED TF (L119)

● BRS

## ARROW MR16 TURTLE FRIENDLY LIGHT SOURCES FOR USE IN ALL MANUFACTURERS MR16 LIGHT FIXTURES



FLLEDMR16SS5W36TF  
12-Volt



FLLEDMR16SS120V5W36TF  
120-Volt

- Long Life - 40,000 Hours L7 Average Rating (rated life to 70% initial light output)
- 1700K-1850K Amber (Turtle Friendly)
- 150 Lumens (5w)
- 585nm - 595nm Amber (Turtle Friendly)
- No UV or IR
- Wide Input Voltage Range of 9v - 15v
- Dimmable
- DOE LM79 Tested
- Power Factor >90%
- 5 Year Limited Warranty
- RoHS Compliant - Energy Efficient - Environmentally Friendly
- Water Resistant & Vibration Resistant
- No Glass or Fragile Parts
- Must be powered by a magnetic transformer





#### SL1510S2L40BRS

Size: 11.25" x 2.50" dia.  
Material: Brass  
Material Options: Copper  
Material Cap Options: Brass Only  
LED: 5w MR16 SS LED BP (L40)  
CCT: AMBER  
Nano Meter: 585-595nm  
120v Option: 5w MR16 SS LED TF (L119)  
18" Brass Chain

● BRS  
● COP



#### SL1510S2L40COP

Size: 10.50" x 2.50" dia.  
Material: Copper  
Material Options: Brass  
Material Cap Options: Copper Only  
LED: 5w MR16 SS LED BP (L40)  
CCT: AMBER  
Nano Meter: 585-595nm  
120v Option: 5w MR16 SS LED TF (L119)  
18" Brass Chain

● BRS  
● COP



#### SL53L40BRS

Size: 4.50" x 2.50"  
Material: Brass  
Material Options: N/A  
LED: 5w MR16 SS LED BP (L40)  
CCT: AMBER  
Nano Meter: 585-595nm  
120v Option: 5w MR16 SS LED TF (L119)  
18" Brass Chain

● BRS

## ARROW MR16 TURTLE FRIENDLY LIGHT SOURCES FOR USE IN ALL MANUFACTURERS MR16 LIGHT FIXTURES



FLLEDMR16SS5W36TF  
12-Volt



FLLEDMR16SS120V5W36TF  
120-Volt

- Long Life - 40,000 Hours L7 Average Rating (rated life to 70% initial light output)
- 1700K-1850K Amber (Turtle Friendly)
- 150 Lumens (5w)
- 585nm - 595nm Amber (Turtle Friendly)
- No UV or IR
- Wide Input Voltage Range of 9v - 15v
- Dimmable
- DOE LM79 Tested
- Power Factor >90%
- 5 Year Limited Warranty
- RoHS Compliant - Energy Efficient - Environmentally Friendly
- Water Resistant & Vibration Resistant
- No Glass or Fragile Parts
- Must be powered by a magnetic transformer

## CANOPIES, JUNCTION BOXES, ADAPTERS, STAKES, STEMS, AND STRAPS



Medium Canopy  
**FA24MDCSTPC**  
Size: 1.38" x 2.640" dia.  
Material: Cast Brass



Medium Canopy  
**FA24MDCST**  
Size: 1.38" x 2.640" dia.  
Material: Cast Brass



Round Mini Canopy  
**FA24**  
Size: .84" x 3.00"  
Material: Cast Brass

For lengths  
see FA24STRAP



Tree Mount Canopy  
**FA24T10**  
Size: .84" x 3.00"  
Material: Cast Brass

See TPS2  
for lengths



Medium Tree Mount Canopy  
**FA24MDCSTTPS24**  
Size: 1.38" x 2.640"  
Material: Cast Brass



Small Tree Mount Canopy  
**FA24TC**  
Size: .50" x 3.00"  
Material: Cast Brass

For lengths  
see FA24STRAP



Medium Tree Mount Canopy  
**FA24MDCSTT10**  
Size: 1.38" x 2.640"  
Material: Cast Brass



Large Cast Canopy  
**FA24LGCST**  
Size: 1.125" x 4.50" dia.  
Material: Cast Brass



Large Cast Two Hole Canopy  
**FA24LGDHCST**  
Size: 1.125" x 4.50" dia.  
Material: Cast Brass



Small Low Profile Canopy  
**FA24LP3BRS**  
Size: .63" x 3.00"  
Material: Brass



Rectangular Canopy  
**FA22CST/BR**  
Size: 1.125" x 3.50" x 5.75"  
Material: Brass



Rectangular Two Hole Canopy  
**FA23CST**  
Size: 1.125" x 3.50" x 5.75"  
Material: Brass



Tree Mount  
**FA111**  
Size: 1.75" x 5.50" x 1.50"  
Material: Brass



Junction Box  
**CFA111BRZ**  
Size: 1.75" x 5.50" x 1.50"  
Material: Brass  
Material Options: Composite



Small Junction Box  
**FA111SMH**  
Size: 1.50" x 2.875" x 1.125"  
Material: Copper  
Material Options: BRS



Surface Junction Box  
**FA111SM**  
Size: 1.50" x 2.875" x 1.125"  
Material: Brass



Tree Mount Bracket  
**FATB2A**  
Size: 1.21" x 5.00"  
Material: Brass  
1/2" Female NPS



Telescopic Stake  
**FA01**  
Size: Adjustable Height x  
Material: Brass  
Material Options: Aluminum



24in Telescopic Stake  
**FA012F**  
Size: 1.60" x 3.38" dia.  
Material: Brass  
Material Options: N/A



Ground Stake  
**FA03**  
Size: 8.40" x 1.95" dia.  
Material: ABS  
Material Options: N/A  
1/2" NPS Female



Large Ground Stake  
**FA03LG**  
Size: 9.06" x 3.00" dia.  
Material: ABS  
Material Options: N/A  
1/2" NPS Female



Small Ground Stake  
**FA03RX**  
Size: 7.58" x 1.94" dia.  
Material: Brass



2 Prong Stake  
**FA032P**  
Size: 6.50" x 3.50" dia.  
Material: Stainless Steel  
1/2" NPS Female



3 Prong Stake  
**FA023P**  
Size: 6.50" x 3.50" dia.  
Material: Stainless Steel  
1/2" NPS Female



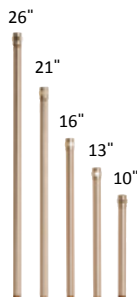
Mounting Post  
**FA24MDCSTPOST**  
Size: 13.00" x 2.26" dia.  
Material: ABS with Brass Cap



Telescopic Stake  
**FA24MDCSTPOST2**  
Size: 16.00" + 12.00" x 2.26" dia.  
Material: ABS with Brass Cap



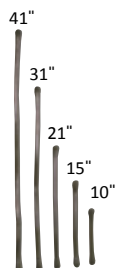
Mounting Pedestal  
**C/FA25(12v) C/FA26(120v)**  
Size: 20.00" x 3.00"  
Material: ABS with Brass Cap  
Material Options: Composite



1/2in NPS Extension Wands w/ Coupler  
**FA30/31/32/33/34**  
Size: 1/2" NPS x Length Listed Above  
Material: Brass



Polyester Straps  
**TPS2 / TPS22**  
Size: Lengths from 2' to 8'  
Material: Polyester w/ Plastic Buckle  
Options: 1.00" or 2.00" straps



Rubber Strap for Tree Canopy  
**FA24STRAP**  
Size: Lengths from 10.00" to 41.00"  
Material: EPDM Rubber  
Stretches up to 10.00" greater than size



## CONTACT US

[www.focusindustries.com](http://www.focusindustries.com)  
(949)830-1350 | Toll Free: (888)882-1350  
[orders@focusindustries.com](mailto:orders@focusindustries.com)  
[marketing@focusindustries.com](mailto:marketing@focusindustries.com)

**STAY FOCUSED — WE'LL MAKE IT YOUR WAY!**

FOCUS INDUSTRIES, INC. © TURTLE FRIENDLY BROCHURE



2024