



www.focusindustries.com

Focus Industries

Underwater Lighting

A complete guide for Focus Industries LED brass underwater lights



LANDSCAPE • ARCHITECTURAL • HOSPITALITY • ENTERTAINMENT • ILLUMINATION

SPECIALTY LIGHTING UNDERWATER LIGHTS

12v

SL11 LED MODULE SERIES



SL11LEDMBRS
7/11/15 or 20w
LED Module
Cast Brass
Underwater
Light; 15' cord

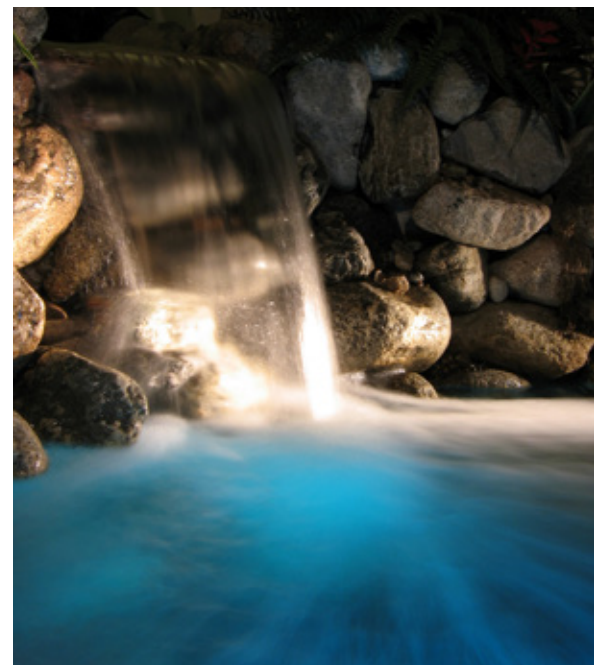


SL11ABLEDMBRS
7/11/15 or 20w
LED Module
Cast Brass
Underwater Light
w/ aiming bracket
& 15' cord



SL11ABACLEDMBRS
7/11/15 or 20w LED
Module Cast Brass
Underwater Light w/
aiming bracket,
collar & 15' cord

HOUSING	Cast brass
AIMING BRACKET	Cast brass w/ black composite thumb knobs
LENS	High impact clear tempered flat glass
LIGHT SOURCE	7w,11w,15w or 20w integrated LED module with 12v driver on board
OPTICS	15° spot, 40° flood, 60° wide flood or no optics 160° very wide flood
SOCKET	None, hard wired LED module
WIRING	15 feet 18/2 SJTOW cord (additional length available in 5ft increments)
CONNECTOR	Brass, nickel plated liquid tight straight bushing from side of fixture
MOUNTING	Surface mount aiming bracket on AB models For securing to wall or floor use appropriate stainless steel screws and holes (provided)
FINISH	Unfinished brass
FINISH OPTIONS	Black acid treatment add (-BAT) to catalog number, Brass acid rust add (-BAR) to catalog number



COLOR LENS OPTIONS AVAILABLE



Red (add -R)
Amber (add -A)
Green (add -G)
Blue (add -B)

SPECIALTY LIGHTING UNDERWATER LIGHTS

12v

SL33 MR16 LED SERIES



SL33ABL24
SL-33-LED w/
aiming bracket



SL33ABACL24BAT
SL-33-LED w/ aiming
bracket & angle collar



SL33SMAACL24BAR
SL-33-LED w/ side
mount & angle collar



SL33ACL24
SL-33-LED w/
angle collar



SL33SML24
SL-33LED w/
side mount



SL33L24
3w MR16 LED (36°)
40,000 hour
Cast Brass
Underwater Light
w/15' cord

HOUSING	Cast brass
AIMING BRACKET	Cast brass w/ black composite thumb knobs
LENS	High impact clear tempered flat glass
LED SUPPLIED	3w ARROW MR16 LED (40,000 hours average rating)
LED OPTIONS	5w ARROW MR16 LED (40,000 hours average rating) 7w ARROW MR16 LED (40,000 hours average rating) 8.5w Green Creative MR16 LED (25,000 hours average rating)
SOCKET	GU5.3 Bi Pin ceramic with 250°C lead wires
WIRING CONNECTOR	15 feet 18/2 SJTOW cord Brass, nickel plated liquid tight straight bushing from bottom of fixture side mount wire (-SM) available
MOUNTING	Surface mount aiming bracket on AB models For securing to wall or floor use appropriate stainless steel screws and holes (provided)
FINISH FINISH OPTIONS	Unfinished brass Black acid treatment add (-BAT) to catalog number, Brass acid rust add (-BAR) to catalog number

**COLOR LENS
OPTIONS AVAILABLE**



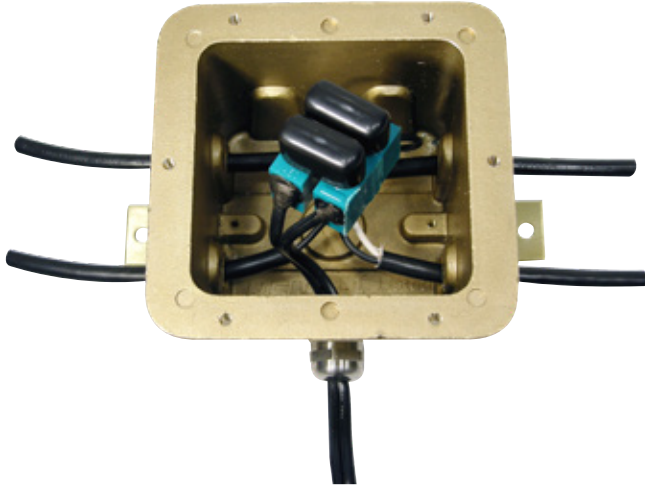
Red (add -R)
Amber (add -A)
Green (add -G)
Blue (add -B)



SPECIALTY LIGHTING UNDERWATER LIGHTS

12v

THE OCTOPUS JBOX

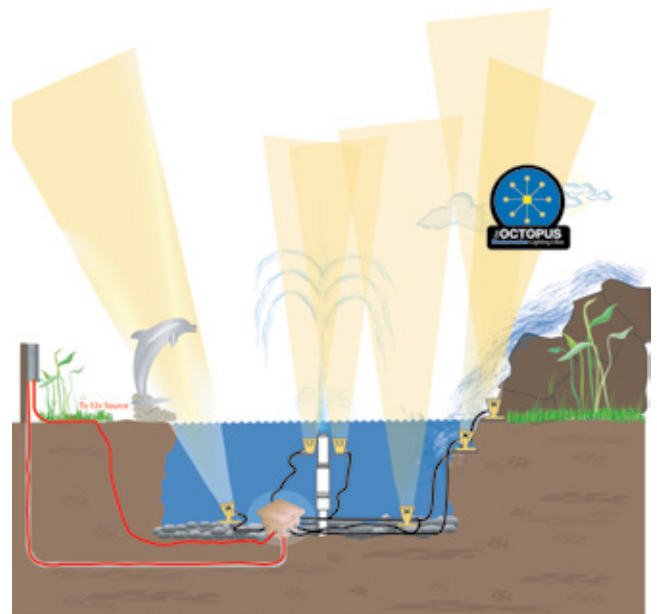


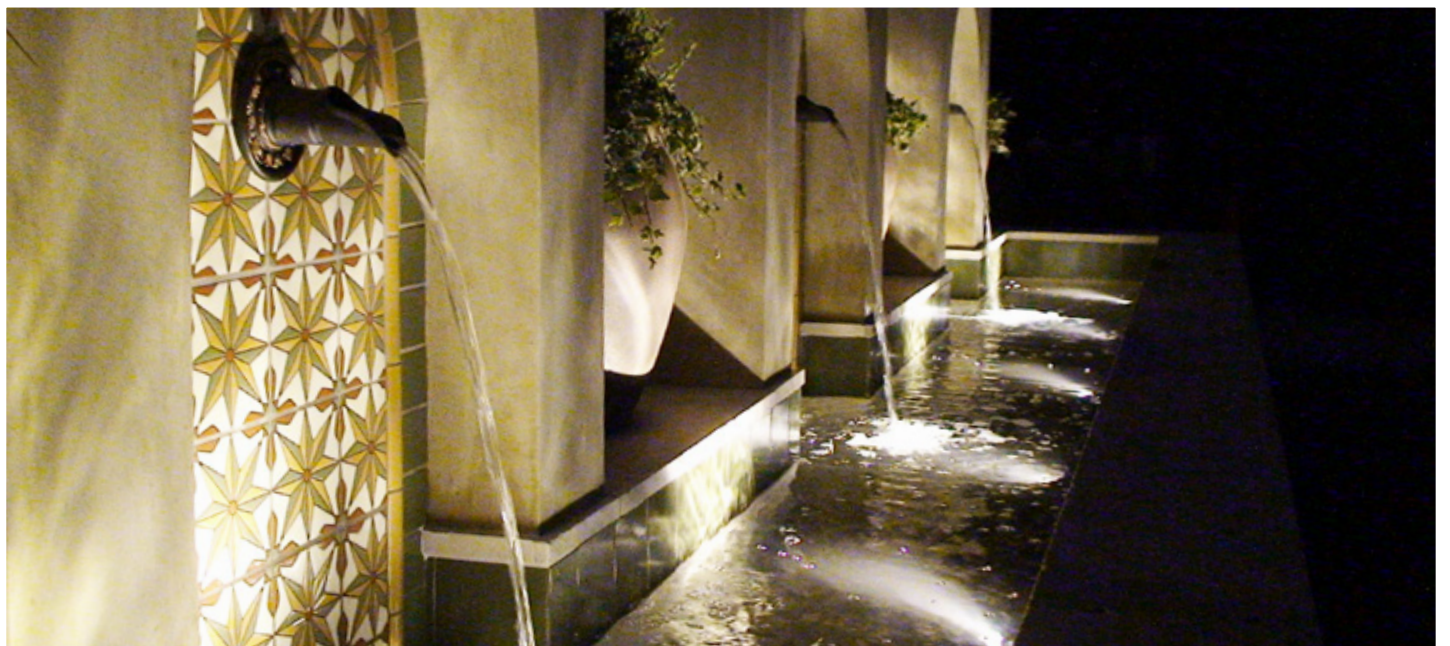
FAH20JB
Underwater J-Box
(w/25ft 12/2C feed
wire) 5.50 Lbs

“The **OCTOPUS**” underwater J-Box is designed for connection of up to eight 12v 18/2 SJTOW cords for under water fixtures. Tap sizes available - PG9, PG11, 1/2”NPS & 3/4” NPS. For 1/2” or 3/4” service conduit contact FOCUS. For additional PG9 hole with plug, specify at time of order. NOTE: Brass liquid tight fittings recommended. Fitting size must match cable size to ensure water proof connection.

CONSTRUCTION	20 cubic inch cast brass body and cast brass cover
GASKET	Black silicone, 50 durometer
FITTINGS	Standard J-box not supplied with fittings. Brass, nickel plated PG9 Liquid Tight available. Specify number required at time of order
FITTING OPTIONS	Brass, nickel plated PG11 Liquid Tight Internal Connector: Teal high temperature thermal plastic housing with stainless steel barrel lugs and 3M dielectric sealing tape; 200 watt maximum load
FEED WIRE	Standard J-box not supplied with feed wire. 12-2C cable available in increments of 5 feet starting at 25 feet. Specify at time of order
MOUNTING	Surface mount bracket attached

Supplied standard without holes or fittings. To receive a tapped hole and liquid tight fitting specify at time of order. Specify number of fixture ports PLUS 1 feed for 12/2C lead wire eg: 4 = 3 Fixture ports plus 1 Lead Wire port. Designed for up to eight fixtures add (-1 to - 9) to above catalog number. Fits all FOCUS underwater fixtures. If you are using another manufacturers fixture you must specify the desired size and location of holes at time of order. Focus does not carry all types & sizes of liquid tight fittings. Warranty Disclaimer: Alterations of product are not recommended by FOCUS and voids warranty.







SL11LEDM1540ABACBRS



SL33ABL24BRS



SL11LEDM1140SMBRS

We are now
More Custom
THAN EVER BEFORE!

Resorts ▪ Hotels ▪ Restaurants
Shopping Centers ▪ Universities ▪ Colleges ▪ Amphitheaters
Amusement Parks ▪ Banks ▪ Sports Facilities
Hospitals ▪ Luxury Condos ▪ Custom Homes



DESIGNED
MANUFACTURED
IN THE USA

© FOCUS INDUSTRIES. ALL RIGHTS RESERVED
UNDERWATER BROCHURE

Focus Industries
25301 Commercentre Drive
Lake Forest, CA. 92630
(949)830-1350
www.focusindustries.com

TO PLACE ORDERS:
ORDERS@FOCUSINDUSTRIES.COM
TOLL FREE (888)882.1350