

AL05 SERIES SPEC SHEET

AL05

PROJECT:

TYPE:

DATE:

CATALOG NUMBER: AL01L12BRS



AL05L12BLT



AL05LEDPBAT

CATALOG ORDER LOGIC

EXAMPLE: AL05L12BLT

FIXTURE

AL Area Light

TYPE

05

LED

- ☐ L10 3w Omni3 Super Saver LED (Bi-Pin) 12v
- ☐ L12 3w Omni3 Super Saver LED (Single Contact) 12v
- ☐ L160 3w Omni3 Super Saver LED (Bi-Pin) 120v
- ☐ LEDP 4w Round LED 3000K, 350lm

FINISH (standard finishes listed)

- ☐ BLT (Aluminum - Black Texture Powder Coat)
- ☐ BRT (Aluminum - Bronze Texture Powder Coat)
- ☐ BRS (Unfinished- Brass)

Premium and Acid Finishes (See page 4 for more color options)
Pantone & RAL Colors (Enter RAL or Pantone number at end of part number)

WEIGHT

- Aluminum (2.0lbs)
- Brass (3.0lbs)

ADDITIONAL INFORMATION



[IES Files available for download](#)

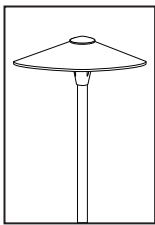


landscape • architectural • hospitality • entertainment • illumination

FOCUS INDUSTRIES INC.
25301 COMMERCE CENTRE DRIVE
LAKE FOREST, CA. 92630
949.830.1350 | TOLL FREE: 888.882.1350
WWW.FOCUSINDUSTRIES.COM

DESIGNED
MANUFACTURED
IN THE USA





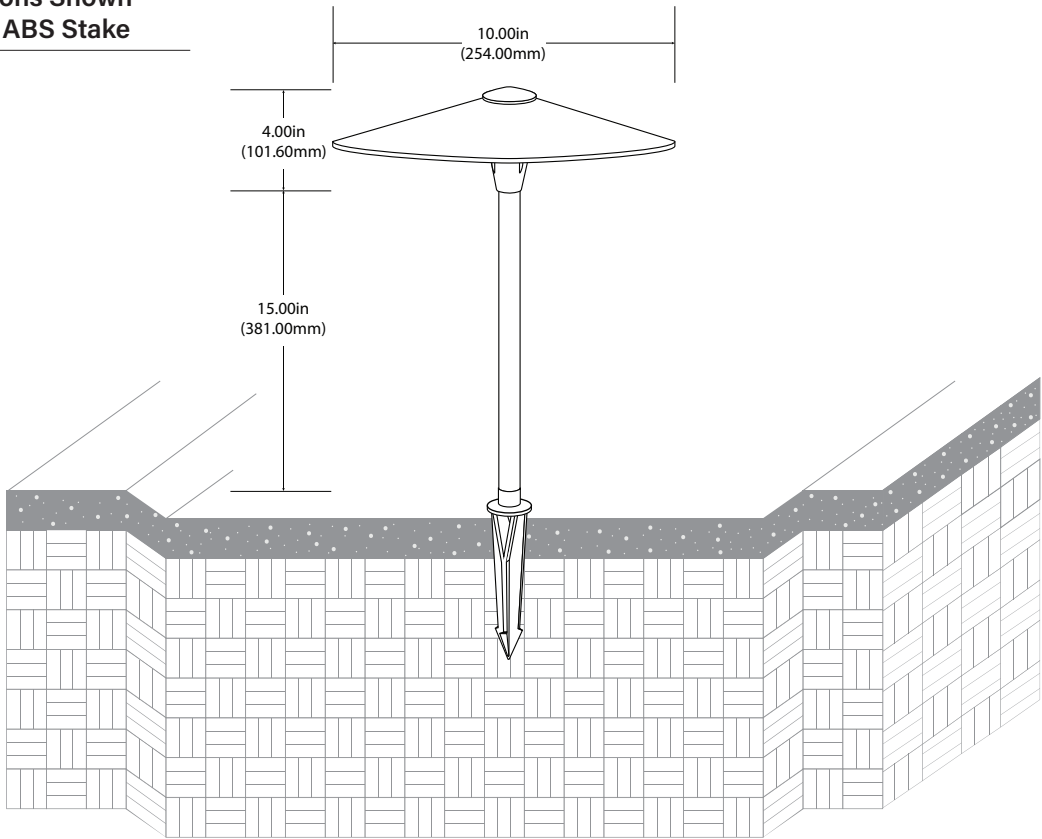
AL05 SERIES SPEC SHEET

AL05

PROJECT:	TYPE:	DATE:
CATALOG NUMBER: AL01L12BRS		

DIMENSIONS

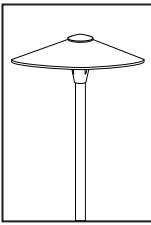
Dimensions Shown
with 9in ABS Stake
AL05L12



SPECIFICATIONS

INTERNALS	VOLTAGE	12v-120v
	LED	3w Omni3 Super Saver LED (L12) 3000K, 300lm / 3w Omni3 Super Saver LED (L160) 3000K, 400lm for 120v / 4w LED Panel (LEDP) 3000K, 350lm
	WIRING	12v: Standard black 3ft 18/2 zip cord from base of fixture / 120v: Standard wire
	SOCKET	Single contact bayonet, brass nickel plated lamp socket screw shell (Ba15s), double contact (Ba15d) for 120v
	CONNECTION	FA05 quick connector (not supplied) from fixture to main cable (12/2, 10/2 or 8/2) 12v only
EXTERNALS	BODY	Cast aluminum or cast brass
	HAT	Cast aluminum or cast brass
	STEM	Matching aluminum or brass stem
	MOUNT	FA03 (Black ABS 9in stake, tapped 1/2in NPS
	FINISH	Aluminum: Polyester powder coat. Brass: Powder coat and acid finish options available (see page 4)
	LISTINGS	Outdoor use. Suitable for wet locations. ETL.





AL05 SERIES SPEC SHEET

AL05

PROJECT:

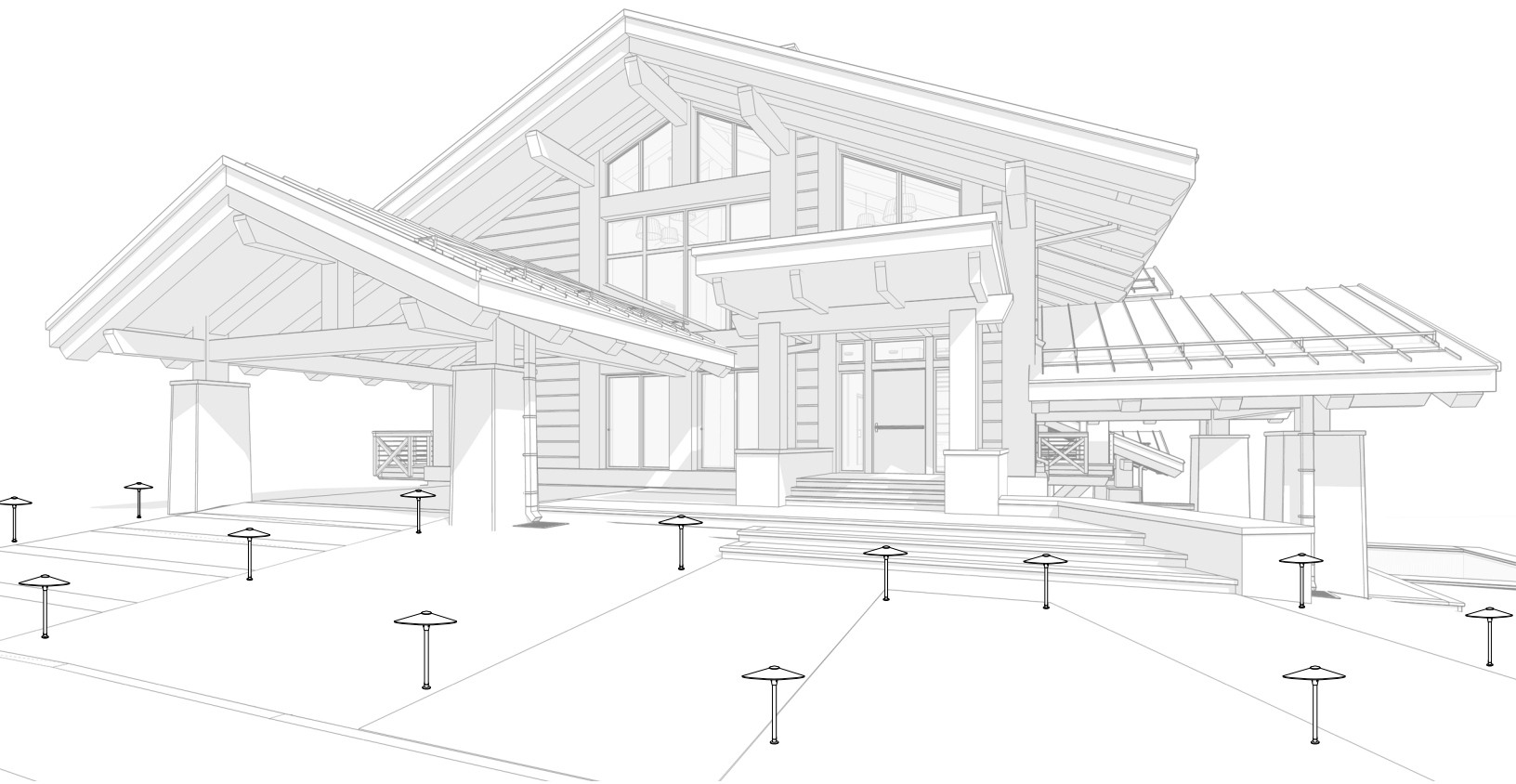
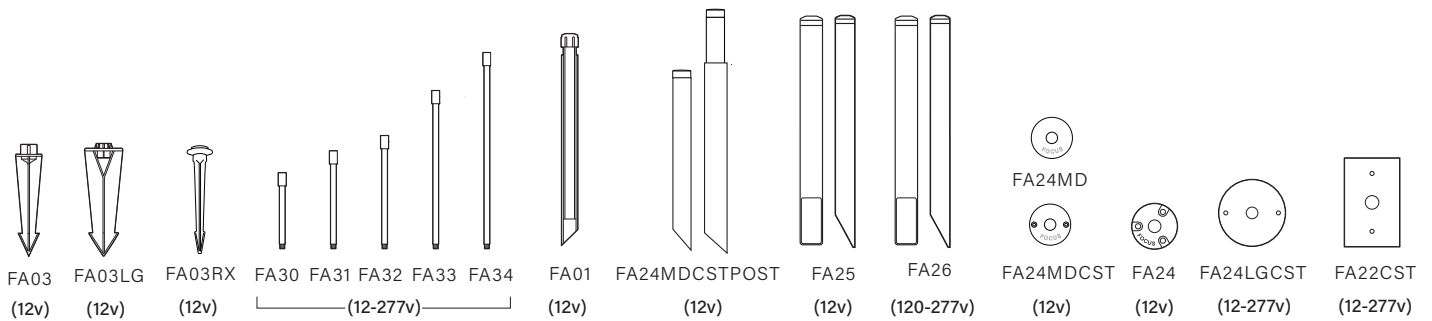
TYPE:

DATE:

CATALOG NUMBER: AL01L12BRS

ACCESSORIES

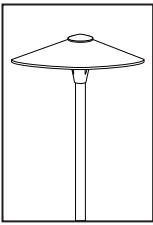
(Configure and order accessories separately)



FOCUS INDUSTRIES INC.
25301 COMMERCE DRIVE
LAKE FOREST, CA. 92630
949.830.1350 | TOLL FREE: 888.882.1350
WWW.FOCUSINDUSTRIES.COM

DESIGNED
MANUFACTURED
IN THE USA





AL05 SERIES SPEC SHEET

AL05

PROJECT:	TYPE:	DATE:
CATALOG NUMBER: AL01L12BRS		

FINISHES

STANDARD FINISHES



Black Texture
(-BLT)



Bronze Texture
(-BRT)

PREMIUM FINISHES



Dark Bronze
(-DBZ)



Black Magic
(-BKM)



White Gloss
(-WHT)



White Texture
(-WTX)



Stucco
(-STU)



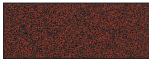
Chrome Powder
(-CPR)



Weathered Iron
(-WIR)



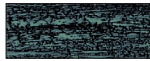
Weathered Brown
(-WBR)



Rust
(-RST)



Luna
(-LUN)



Rubbed Verde
(-RBV)



Hunter Texture
(-HTX)

CUSTOM FINISHES

Supply RAL or Pantone here

RAL #:

Need help finding a RAL color?
<https://www.ralcolor.com/>

PANTONE #:

Need help finding a Pantone color?
<https://www.pantone.com/color-finder>

ACID FINISHES

Brass and Copper fixtures only



Acid Rust
Copper (-CAR)
Brass (-BAR)



Black Acid Treatment
(-BAT)



Acid Verde
Copper (-CAV)
Brass (-BAV)



SCAN FOR FULL SIZE
COLOR SWATCHES

