



Designed,
Manufactured,
In the USA



landscape • architectural • hospitality • entertainment • illumination



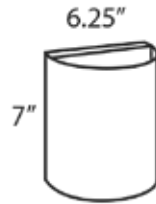
Wall Sconce Series SL55 CUSTOM ORDERING GUIDE 2021



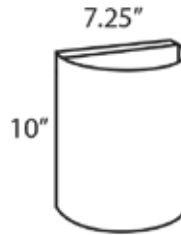
Stay **Focused**
We'll Make it Your Way

TO PLACE ORDERS:
TOLL FREE (888)882.1350
ORDERS@FOCUSINDUSTRIES.COM

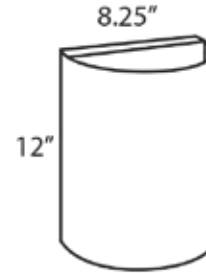
ORDERING GUIDE



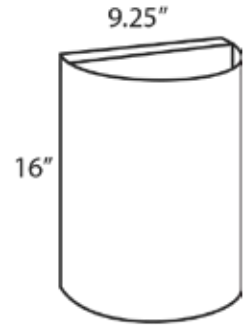
Small
(4" depth)



Medium
(4.5" depth)




Large
(5" depth)



X-Large
(5.5" depth)

* CONSULT FACTORY FOR CUSTOM SIZES

SL-55- _____ 1 - _____ 2 - _____ 3 - _____ 4 - _____ 5 - _____ 6			IP54 	
ORDERING INFORMATION	1. SIZE S: SMALL M: MEDIUM L: LARGE X: X-LARGE C: CUSTOM (Consult Factory)	3. LIGHT SOURCE SMALL SIZE SCENCE LP4: 4W LED PANEL MEDIUM SIZE SCENCE LP4: 4W LED PANEL LARGE SIZE SCENCE LP5: 5W LED PANEL LP8: 8W LED PANEL X-LARGE SIZE SCENCE LP8: 8W LED PANEL LP16: 2 X 8W LED PANEL	5. VOLTAGE 12: 12 VOLT 120: 120 VOLT 240: 240 VOLT 277: 277 VOLT	
	2. DESIGN CODE SEE BELOW FOR STOCK DESIGNS For custom designs, Focus will assign a design code after artwork is confirmed. See attached artwork submittal sheet.	4. KELVIN BLANK: 3000K 52: 5200K	6. COLOR BLT: BLACK TEXTURE ATV: ANTIQUE VERDE BLK: BLACK GLOSS BRT: BRONZE TEXTURE CAM: CAMEL TONE CPR: CHROME POWDER HTX: HUNTER TEXTURE RBV: RUBBED VERDE RST: RUST STU: STUCCO WBR: WEATHERED BROWN WIR: WEATHERED IRON WHT: WHITE GLOSS WTX: WHITE TEXTURE	BRS: BRASS, UNFINISHED BAR: BRASS, ACID RUST BAV: BRASS, ACID VERDE BAT: BRASS, BLACK ACID COP: COPPER, UNFINISHED CAR: COPPER, ACID RUST CAV: COPPER, ACID VERDE CUSTOM POWDER COAT COLORS AVAILABLE. CONSULT FACTORY FOR DETAILS

SPECIFICATIONS

MATERIAL: Aluminum Brass, or Copper

LED LIGHT SOURCE: Flat panel LED in 4w, 5w, 8w or 2 x 8w

INTERNAL LED DRIVER: 12v AC input, 120v 240v or 277v input

SOCKET: None, LED is hard wired

WIRING: 12v black 18/2 SPT 1W 8" from base of fixture
120v standard black, white, and green (ground)

POWER SUPPLY: 12v remote AC magnetic transformer
120v direct power

FINISH: See color options in ordering information. custom colors available, Consult Factory

Compact Fluorescent option available only for use indoors or in sheltered areas with no direct contact with rain. See Focus Price Guide for details.

Custom Design Notes:

ARTWORK GUIDELINES FOR PLASMA CUTTING

Our goal is to make the art submittal process accurate, timely and convenient. If you cannot provide artwork in the following formats or are not sure what to give us, please call us at 888-882-1350.

Supported Applications

- Photoshop: Supply an un-flattened PSD or TIFF file with minimum 150dpi. **Avoid JPEGs.**
- Illustrator: Supply AI file or PDF from AI file. Convert all text to outlines.
- InDesign: Supply PDF file only
- Freehand: Supply PDF file only
- Quark: Supply PDF file only
- Corel Draw: Supply PDF file only. Convert all text to curves.

COLOR: We prefer Black and White artwork. If color artwork is used, make sure they are solid colors. Plasma cutter cannot recognize fades and color changes.

FONTS: All fonts used to create the text in Photoshop must be rasterized, including fonts embedded in placed images. Fonts in Illustrator or Corel documents must be converted to outlines/curves. There are thousands of text fonts available and we cannot have every one on file so please remember to convert your fonts.

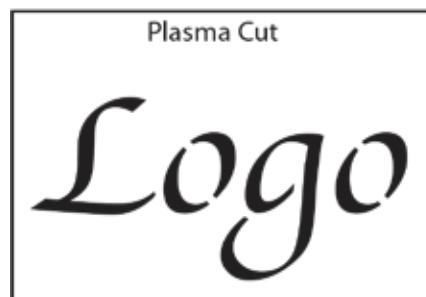
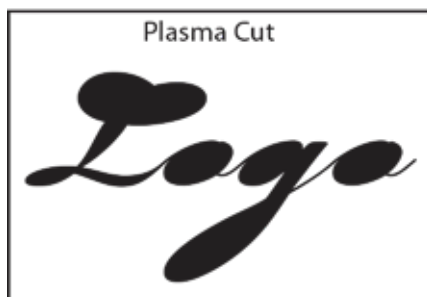
FILE RESOLUTION: Most file types are made of pixels. Pixels are single units of color that, when viewed together, make up an image (they look like little squares when viewed close in). The more pixels in an image, the better it looks and the crisper it is. An image with low resolution contains fewer pixels, resulting in a jagged look that cannot be plasma cut. We require minimum 150dpi file resolution. **JPEG, BMP and PNG files from web sites cannot be used.**

STYLE: Plasma cutting is 2 dimensional process. The image is cut out of the metal so there are the cut areas and the solid metal areas. Make sure your artwork is simplified for cutting process. See below for examples.

NOTE: We offer a vinyl printed lens if you require color logos/artwork or have very intricate artwork.

CROSSED LINES AND CIRCLES
WILL END UP AS SHOWN BELOW
WHEN PLASMA CUT:

ARTWORK WITH SIMPLE LINES
AND SEPARATION OF IMAGES
WILL PLASMA CUT CORRECTLY



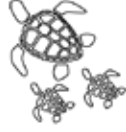
TO PLACE ORDERS:
TOLL FREE (888)882.1350
ORDERS@FOCUSINDUSTRIES.COM



000 = No Design



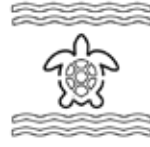
101 = Fish/Waves



102 = 3 Turtles



103 = Big Turtle



104 = Turtle/Waves



105 = Salmon



106 = Pinapples



107 = Lighthouse



108 = Swordfish



109 = Hibiscus



110 = Plumeria



111 = Bamboo



112 = Bold Pineapple/Flourish



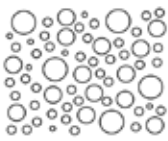
201 = Desert Coyote



301 = Wine



302 = Grapes



CUSTOMIZE

STANDARD FINISHES



Black Texture (-BLT)



Bronze Texture (-BRT)

CUSTOM FINISHES Supply RAL or Pantone here

RAL #:

Need help finding a RAL color?
<https://www.ralcolor.com/>

PANTONE #:

Need help finding a Pantone color?
<https://www.pantone.com/color-finder>

PREMIUM FINISHES

NEW



Dark Bronze (-DBZ)

NEW



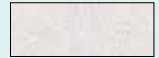
Black Magic (-BKM)



White Gloss (-WHT)



White Texture (-WTX)



Stucco (-STU)



Chrome Powder (-CPR)



Weathered Iron (-WIR)



Weathered Brown (-WBR)



Rust (-RST)



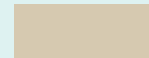
Camel Tone (-CAM)



Rubbed Verde (-RBV)

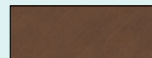


Hunter Texture (-HTX)

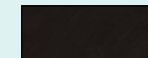


Designer Beige (-DBE)

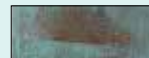
ACID FINISHES Brass and Copper fixtures only



Acid Rust Copper (-CAR) Brass (-BAR)



Black Acid Treatment (-BAT)



Acid Verde Copper (-CAV) Brass (-BAV)

* Powder Coat Finishes over Brass are custom and **Non-Returnable**



SCAN FOR FULL SIZE COLOR SWATCHES

TO PLACE ORDERS:
TOLL FREE (888)882.1350
ORDERS@FOCUSINDUSTRIES.COM



DESIGNED,
MANUFACTURED,
IN THE USA

go green
led solutions



25301 Commercentre Drive, Lake Forest, CA. 92630
(949) 830-1350 | (888)882-1350 | www.focusindustries.com

TO PLACE ORDERS - TOLL FREE (888)882.1350
ORDERS@FOCUSINDUSTRIES.COM

FOR MORE INFORMATION
MARKETING@FOCUSINDUSTRIES.COM