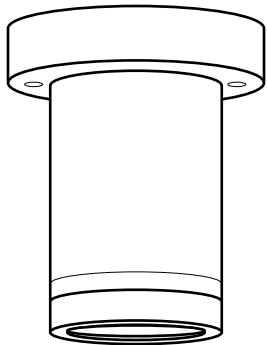




Cylinder Surface Mounts

RXS Series Ceiling Down Lights

The Focus Industries RXS Cylinder Ceiling Mount Down Lights offer a sleek and durable lighting option, available in aluminum, brass, copper, and stainless steel. Designed for ceiling-mounted applications, these down lights provide focused illumination, perfect for enhancing outdoor spaces with a modern touch. Their versatile material options ensure both aesthetic appeal and long-lasting performance in various environments.



Brass Cylinder Surface Mounts



PAR20
RXS10SM24NLP20BRS



PAR20
RXS10SMFPL142BRS



MR16
RXS12SML24BRS



LED MODULE
RXS18SM24LEDM740BRS
WATTAGE OPTIONS
11W/15W/20W Available
Consult factory for more information

Copper Cylinder Surface Mounts



PAR20
RXS10SM24NLP20COP



PAR20
RXS10SMFPL142COP



MR16
RXS12SML24COP



LED MODULE
RXS18SM24LEDM740COP
WATTAGE OPTIONS
11W/15W/20W Available
Consult factory for more information

RXS10SM24NLP20S | RXS10SMFPL142
RXS12SML24 | RXS18SM24LEDM740

Brass Cylinder Surface Mounts
3w MR16 BP 36° (L24) 40,000 hrs 3000k 270 Lumen
3w MR11 GU4 BP LED 40° (L68) 50,000 hrs 3000K 300 Lumen
3w MR16 GU10 Base 36° (L108) 40,000 hrs 3000K 270 Lumen [120v]
7w LEDM 2800K 450 Lumen
11w LEDM 2800k 600 Lumen
15w LEDM 2800K 900 Lumen
20w LEDM 2800K 1500 Lumen
8w PAR20 15° Spot(L140) 3000K 720 Lumen (RSX10 Only)
8w PAR20 40° Spot(142) 3000K 720 Lumen (RSX10 Only)
12v - 277v (277v with driver)

RXS10SM24NLP20 | RXS10SMFPL142COP
RXS12SML24COP | RXS18SM24LEDM740

Copper Cylinder Surface Mounts
3w MR16 BP 36° (L24) 40,000 hrs 3000k 270 Lumen
3w MR11 GU4 BP LED 40° (L68) 50,000 hrs 3000K 300 Lumen
3w MR16 GU10 Base 36° (L108) 40,000 hrs 3000K 270 Lumen [120v]
7w LEDM 2800K 450 Lumen
11w LEDM 2800k 600 Lumen
15w LEDM 2800K 900 Lumen
20w LEDM 2800K 1500 Lumen
8w PAR20 15° Spot(L140) 3000K 720 Lumen (RSX10 Only)
8w PAR20 40° Spot(142) 3000K 720 Lumen (RSX10 Only)
12v - 277v (277v with driver)

TO PLACE ORDERS:
TOLL FREE (888)882.1350
ORDERS@FOCUSINDUSTRIES.COM

Stainless Steel Surface Mounts



MR16
RXS12SML242SS



MR16
RXS12SM24L24SS



MR16
RXS12SMFPL24SS

RXS12SML24 | RXS12SM24L24 | RXS12SMFPL24

Stainless Steel Cylinder Surface Mounts

3w MR16 BP 36° (L24) 40,000 hrs 3000k 270 Lumen

5w MR16 BP 36° (L36) 40,000 hrs 3000k 450 Lumen

7w MR16 BP 36° (L48) 40,000 hrs 3000k 550 Lumen

3w MR16 GU10 Base 36° (L108) 40,000 hrs 3000K 270 Lumen [120v]

5w MR16 GU10 Base 36° (L116) 40,000 hrs 3000K 450 Lumen [120v]

7w MR16 GU10 Base 36° (L126) 40,000 hrs 3000K 550 Lumen [120v]

12v - 277v (277v with driver)

*Powder coat and Acid finishes available,
see page 4 for details

Surface Mount Canopy Options

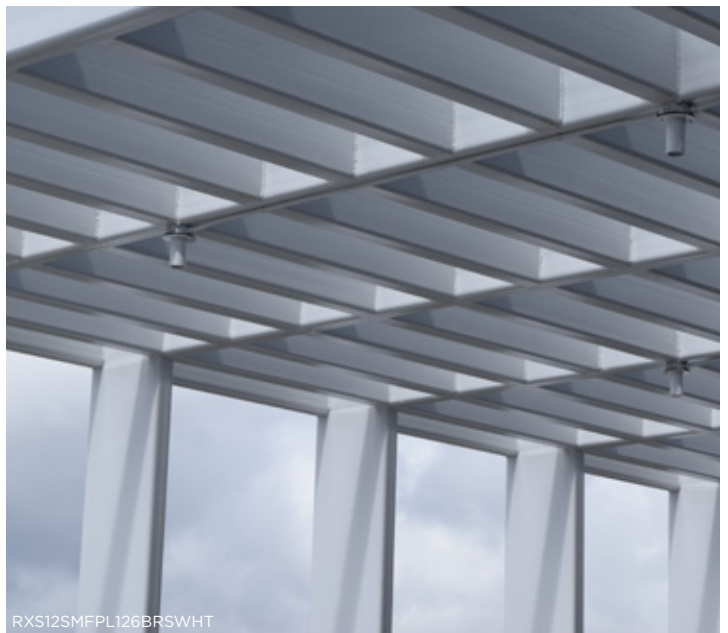
3" CANOPY [12V] (SM)

4.5" CANOPY [12V/120V] (SM24)

4.5" FLAT PLATE [12V] (SMFP)



RXS12SMFPL126BRSWHT



RXS12SMFPL126BRSWHT



RXS12SMFPL126BRSWHT

STANDARD FINISHES

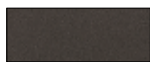


Black Texture
(-BLT)



Bronze Texture
(-BRT)

PREMIUM FINISHES



Dark Bronze
(-DBZ)



Black Magic
(-BKM)



White Gloss
(-WHT)



White Texture
(-WTX)



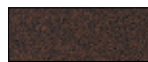
Stucco
(-STU)



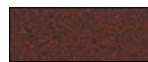
Chrome Powder
(-CPR)



Weathered Iron
(-WIR)



Weathered Brown
(-WBR)



Rust
(-RST)



Luna
(-LUN)



Rubbed Verde
(-RBV)



Hunter Texture
(-HTX)

CUSTOM FINISHES Supply RAL or Pantone here

RAL #:

Need help finding a RAL color?
<https://www.ralcolor.com/>

PANTONE #:

Need help finding a Pantone color?
<https://www.pantone.com/color-finder>

ACID FINISHES Brass and Copper fixtures only



Acid Rust
Copper (-CAR)
Brass (-BAR)



Black Acid Treatment
(-BAT)



Acid Verde
Copper (-CAV)
Brass (-BAV)

* Powder Coat Finishes over Brass are custom and **Non-Returnable**



SCAN FOR FULL SIZE
COLOR SWATCHES



DESIGNED.
MANUFACTURED.
IN THE USA

go green
led solutions

