



landscape • entertainment • architectural • hospitality • illumination

# SL-60 SERIES STEP LIGHT





# LED STEP LIGHTS SL-60 SERIES

GO GREEN

TYPE

## SPECIFICATIONS

**CONSTRUCTION:** Die Cast Aluminum, Brass or Stainless Steel step light

**LIGHT SOURCE:** Integrated 12v 3w LED or 120v 4w LED with Driver On Board (No need for separate LED driver); 200 Lumens, warm white 2700K

**LIFETIME RATING:** 50,000 hours

**SOCKET:** None

**GASKET:** Black neosponge closed cell; .190" thickness

**WIRING 12V:** 6" black 18 gauge zip cord.

**WIRING 120V:** Standard Black (line), White (neutral), Green (ground)

**SINGLE GANG BOX:** Focus FA-SG-BOX fiberglass box included.

Fixture insert only without Back Box is available (SL60NB) if back box is supplied by others or is already installed;

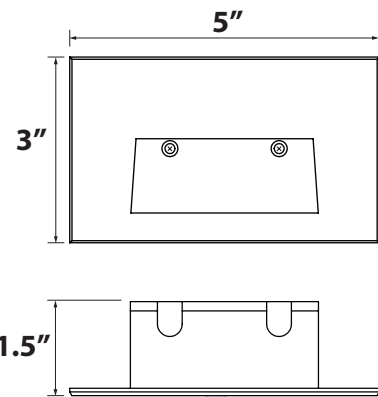
**NOTE: If box is supplied by others it must have minimum inside dimensions of 3"(l) x 2"(w) x 2.5"(d) and plate mounting holes 3.22" to 3.30" apart on center.**

**MOUNTING:** Stainless Steel bracket and hardware for mounting in single gang junction box; Face plate attaches to bracket with two provided screws

**FINISH:** Aluminum - Black texture polyester powder coat; optional finishes available  
Brass - Unfinished; optional finishes available  
Stainless Steel-Brushed



SL-60-LED12VBLT



SL60NB insert

## ORDERING INFORMATION

CATALOG NO.	DESCRIPTION	LIGHT SOURCE	WEIGHT
SL60-LED12V-BLT	12v Aluminum LED Step Light	3w LED Module	2.0 lbs.
SL60-LED12V-BRS	12v Brass LED Step Light	3w LED Module	3.0 lbs.
SL60-LED12V-SS	12v Stainless LED Step Light	3w LED Module	2.0 lbs.
SL60-LED120-BLT	120v Aluminum LED Step Light	4w LED Module	2.0 lbs.
SL60-LED120-BRS	120v Brass LED Step Light	4w LED Module	3.0 lbs.
SL60-LED120-SS	120v Stainless LED Step Light	4w LED Module	2.0 lbs.

### NO BACK BOX MODELS:

SL60NB-LED12V-BLT	12v Aluminum LED Step Light Insert	3w LED Module	2.0 lbs.
SL60NB-LED12V-BRS	12v Brass LED Step Light Insert	3w LED Module	3.0 lbs.
SL60NB-LED12V-SS	12v Stainless LED Step Light Insert	3w LED Module	2.0 lbs.

SL60NB-LED120-BLT	120v Aluminum LED Step Light Insert	4w LED Module	2.0 lbs.
SL60NB-LED120-BRS	120v Brass LED Step Light Insert	4w LED Module	3.0 lbs.
SL60NB-LED120-SS	120v Stainless LED Step Light Insert	4w LED Module	2.0 lbs.

FASG-BOX	Plastic Single Gang Box only	1.0 lbs.
----------	------------------------------	----------



FA-SG-BOX Single Gang Box



## JOB INFORMATION

Type:	Date:
Job Name:	
Cat. No.:	
Lamp(s):	
Specifier:	
Contractor:	
Notes:	

FOCUS INDUSTRIES INC.  
25301 COMMERCENTRE DRIVE  
LAKE FOREST, CA 92630

www.focusindustries.com  
sales@focusindustries.com  
(949) 830-1350 • FAX (949) 830-3390

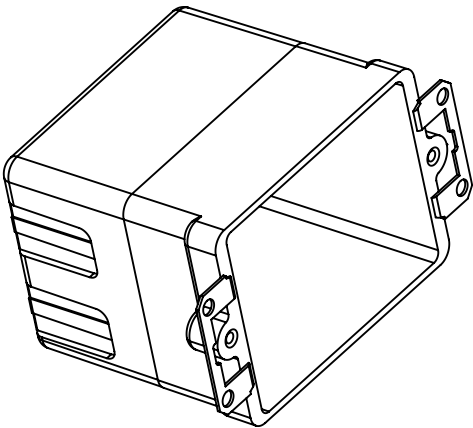
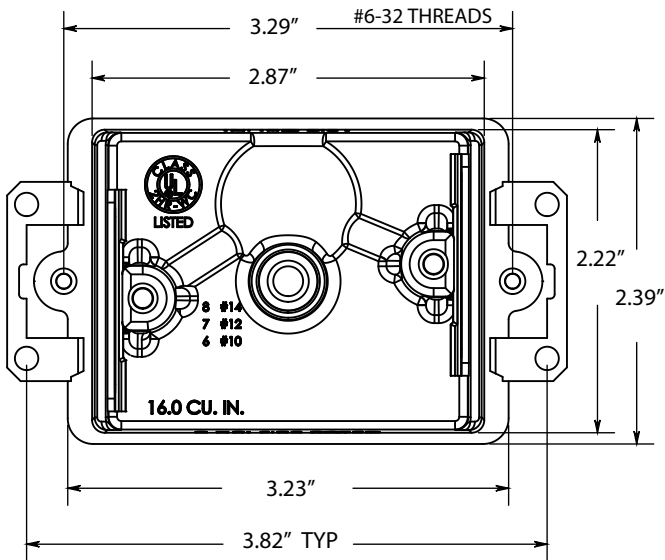
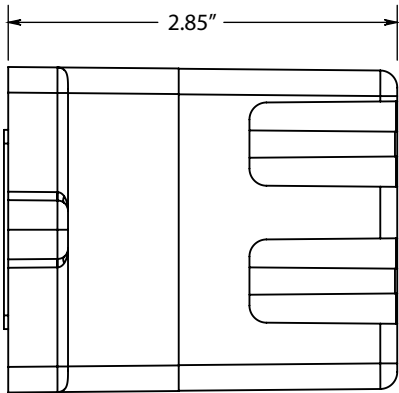
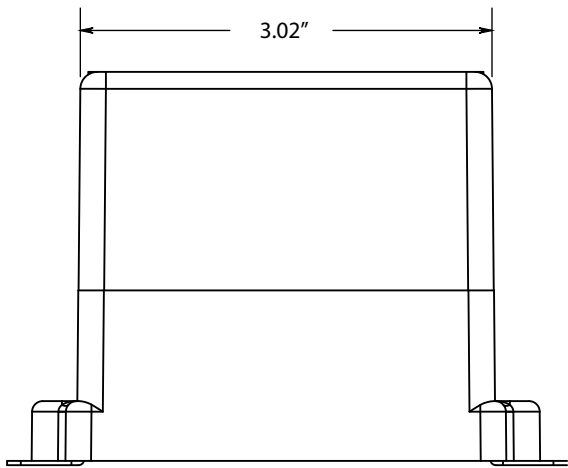
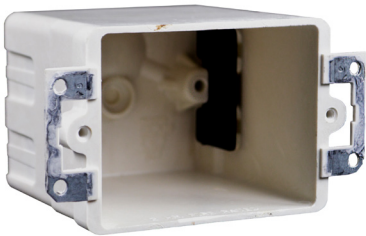
Black Texture (Standard)	Antique Verde	Bronze Texture	Camel	White Texture	Hunter Texture	Rust	Weathered Iron	Weathered Brown	Stucco	Rubbed Verde	Chrome Powder	Acid Rust	Acid Verde	Black Acid Treatment
-BLT	-ATV	-BRT	-CAM	-WTX	-HTX	-RST	-WIR	-WBR	-STU	-RBV	-CPR	-BAR/CAR	-BAV/CAV	-BAT



# LED STEP LIGHTS SL-60 SERIES

TYPE

FA-SG-BOX  
Single Gang Box



Black Texture (Standard)	Antique Verde	Bronze Texture	Camel	White Texture	Hunter Texture	Rust	Weathered Iron	Weathered Brown	Stucco	Rubbed Verde	Chrome Powder	Acid Rust	Acid Verde	Black Acid Treatment
-BLT	-ATV	-BRT	-CAM	-WTX	-HTX	-RST	-WIR	-WBR	-STU	-RBV	-CPR	-BAR/CAR	-BAV/CAV	-BAT

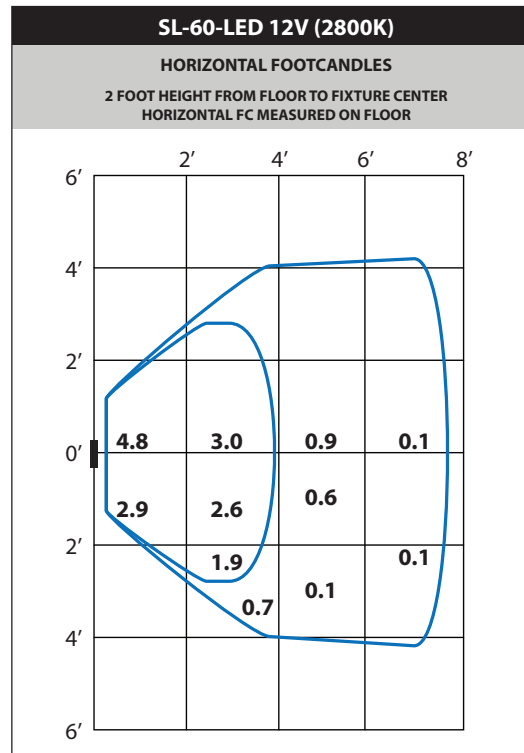
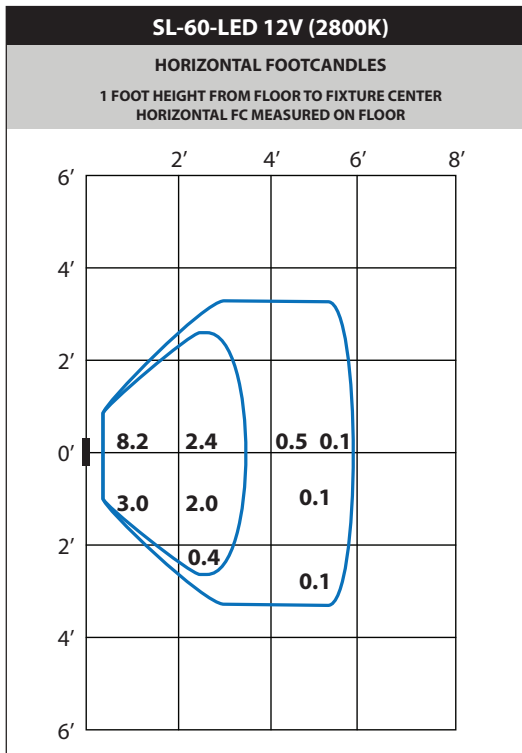
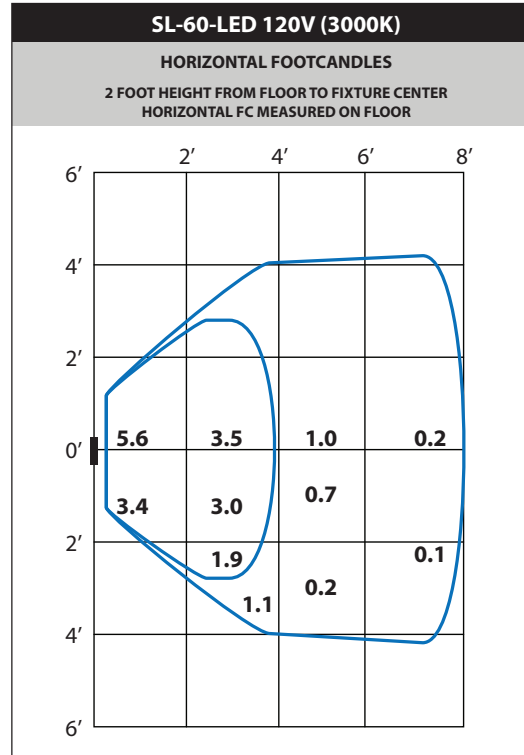
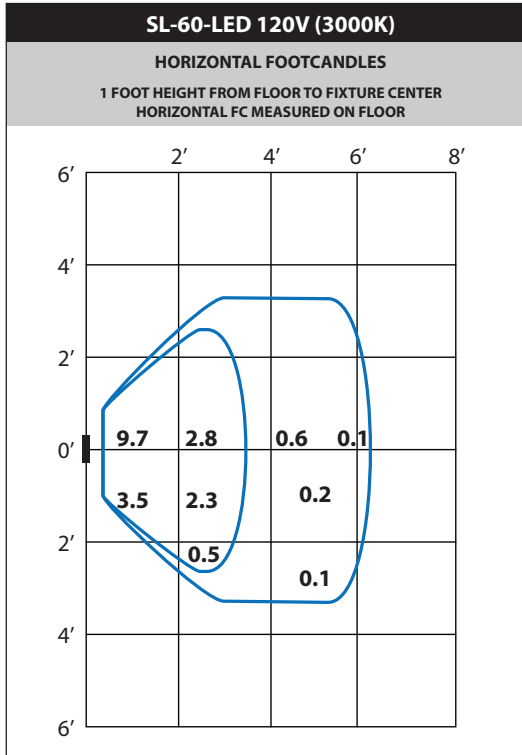




# LED STEP LIGHTS SL-60 SERIES

TYPE

## LIGHT DISTRIBUTIONS AND PHOTOMETRICS



Black Texture (Standard)	Antique Verde	Bronze Texture	Camel	White Texture	Hunter Texture	Rust	Weathered Iron	Weathered Brown	Stucco	Rubbed Verde	Chrome Powder	Acid Rust	Acid Verde	Black Acid Treatment
-BLT	-ATV	-BRT	-CAM	-WTX	-HTX	-RST	-WIR	-WBR	-STU	-RBV	-CPR	-BAR/CAR	-BAV/CAV	-BAT