

PL07 LED PANEL PATH LIGHT SPEC SHEET

PL07LEDP

PROJECT:

TYPE:

DATE:

CATALOG NUMBER:

CATALOG ORDER LOGIC

EXAMPLE: PL07LEDP

FIXTURE

PL Area Light

TYPE

07

12 VOLT LED	WATT	SOCKET	KELVIN	LUMEN
<input type="checkbox"/> LEDP	4w	Square	3000K	480lm
<input type="checkbox"/> LEDP52	4w	Square	5200K	480lm

120 VOLT LED

☐ 120V

120V includes internal LED driver. Must be installed in a sealed FA26 mounting post or approved weatherproof jbox.

OPTIONS

- ☐ NS No Stake
☐ 25F 25 Foot Fixture Lead Wire (12V only)

CUSTOM BODY LENGTH

31" vStandard Body Length

☐ Custom Length _____(S)
(State Number of Inches On the Line Above)

FINISH (STANDARD FINISHES LISTED)

- ☐ BLT (Aluminum - Black Texture Powder Coat)
☐ BRT (Aluminum - Bronze Texture Powder Coat)
☐ BRS (Unfinished- Brass)
☐ COP (Unfinished- Copper)
Premium and Acid Finishes (See page 3 for more color options)
Pantone & RAL Colors (Enter RAL or Pantone number at end of part number)

SHIP WEIGHT / CARTON DIMENSIONS

Aluminum 6061	(3.0lbs)	4" x 4" x 32"
Brass C27200	(4.0lbs)	4" x 4" x 32"
Copper	(4.0lbs)	4" x 4" x 32"
Black ABS	(3.0lbs)	4" x 4" x 32"

ADDITIONAL INFORMATION

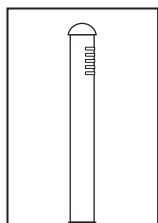
Plug-N-Play LED options available. See AL07 spec sheet.



FOCUS INDUSTRIES INC.
25301 COMMERCE DRIVE
LAKE FOREST, CA. 92630
949.830.1350 | TOLL FREE: 888.882.1350
WWW.FOCUSINDUSTRIES.COM

DESIGNED
MANUFACTURED
IN THE USA





PL07 LED PANEL PATH LIGHT SPEC SHEET

PL07LEDP

PROJECT:

TYPE:

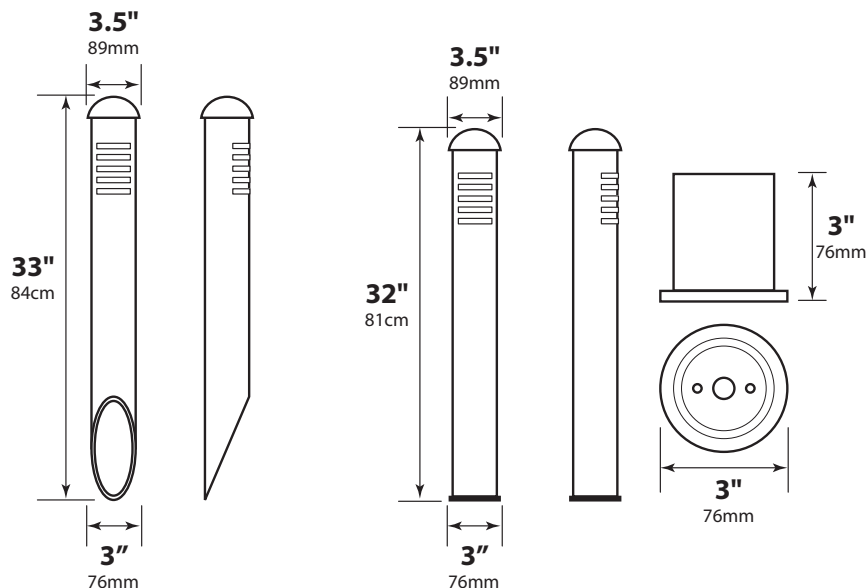
DATE:

CATALOG NUMBER:




DIMENSIONS

Dimensions Show

PL01LEDP



SPECIFICATIONS

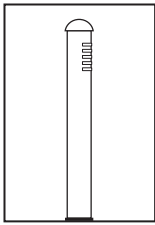
INTERNALS	VOLTAGE	12V (Power with magnetic transformer) 120V (Power with line voltage)
	WIRING	12V Standard 18/2; 2.5ft that comes out of the bottom of fixture 120V Standard 18g, black, white, green (ground)
	DRIVER	12V HW12535012LED: 4.9w 12V internal electronic LED driver, 350mA, 12V AC/DC in 120V HW126350120LED internal driver.
EXTERNALS	CAP	Black ABS / Aluminum-Cast Aluminum BRS / Copper-Brass Cap
	LENS	White acrylic lens .062TH
	HUB	Extrusion, aluminum 6061, round sch 40 pipe, .840" OD x .622" ID x 9.00" L x .109" W Extrusion, brass, C27200, round sch 40 pipe, .840" OD, .622" ID x 9.00" L x .109" W
	BODY	Alum; 3" OD, 31" tall ; actual body diameter is 2.570" OD ; 2.425" ID ABS; 3"OD, 31" tall; actual body diameter is 2.875" OD, 2.465" ID Copper; 3"OD, 31" tall; actual body diameter is 2.625" OD, 2.50" ID
	FINISH	Aluminum: Black or Bronze texture (Standard) See page 3 for more powder coat options. Brass: Unfinished (Standard) See page 3 for more powder coat and acid treatment options. Copper: Unfinished (Standard) See page 3 for more options. ABS: Blacked or rubberd verde
 Click Icon to Download  Intertek 	LISTINGS	ETL, IP65, CE IES files available for download.



FOCUS INDUSTRIES INC.
25301 COMMERCE DRIVE
LAKE FOREST, CA. 92630
949.830.1350 | TOLL FREE: 888.882.1350
WWW.FOCUSINDUSTRIES.COM

DESIGNED
MANUFACTURED
IN THE USA





PL07 LED PANEL PATH LIGHT SPEC SHEET

PL07LEDP

PROJECT:

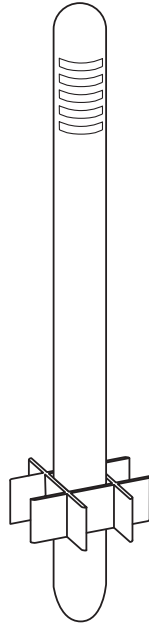
TYPE:

DATE:

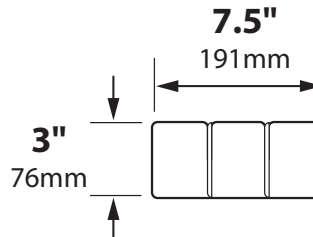
CATALOG NUMBER:

ACCESSORIES

(Configure and order accessories separately) If ordering alternative mounting accessory, check (NS) No Stake box on page 1, to avoid double mounting accessories.



FA-42-FIN
Installed on PL-07



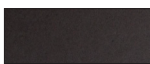
FA-42-FIN
Side View

FINISHES

STANDARD FINISHES



Black Texture
(-BLT)



Bronze Texture
(-BRT)

PREMIUM FINISHES



Dark Bronze
(-DBZ)



Black Magic
(-BKM)



White Gloss
(-WHT)



White Texture
(-WTX)



Stucco
(-STU)



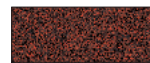
Chrome Powder
(-CPR)



Weathered Iron
(-WIR)



Weathered Brown
(-WBR)



Rust
(-RST)



Luna
(-LUN)



Rubbed Verde
(-RBV)



Hunter Texture
(-HTX)



Mineral Bronze
(-BRZ)

CUSTOM FINISHES Supply RAL or Pantone here

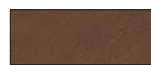
RAL #:

Need help finding a RAL color?
<https://www.ralcolor.com/>

PANTONE #:

Need help finding a Pantone color?
<https://www.pantone.com/color-finder>

ACID FINISHES Brass and Copper fixtures only



Acid Rust
Copper (-CAR)
Brass (-BAR)



Black Acid
Treatment
(-BAT)



Acid Verde
Copper (-CAV)
Brass (-BAV)



FOCUS INDUSTRIES INC.
25301 COMMERCE DRIVE
LAKE FOREST, CA. 92630
949.830.1350 | TOLL FREE: 888.882.1350
WWW.FOCUSINDUSTRIES.COM

DESIGNED
MANUFACTURED
IN THE USA

