

# RXA SERIES AREA LIGHT

RXA03

PROJECT:

TYPE:

DATE:

CATALOG NUMBER:



RXA03L15COP



RXA03FL15COP

## CATALOG ORDER LOGIC

EXAMPLE: RXA03L15COP

## FIXTURE

RXA Area Light

## TYPE

03

## ADD ON OPTION

F Finial

12 VOLT LED	WATT	SOCKET	KELVIN	LUMEN
<input type="checkbox"/> NL (No Lamp)		Ba15s Single Contact		
<input type="checkbox"/> NLBP (No Lamp)		G4 Bi-Pin		
<input type="checkbox"/> L10	3w	G4 Bi-Pin	3000K	300lm
<input type="checkbox"/> L12	3w	Ba15s Single Contact	3000K	300lm
<input type="checkbox"/> L13	3w	G4 Bi-Pin	2700K	270lm
<input type="checkbox"/> L14	3w	G4 Bi-Pin	3000K	270lm
<input type="checkbox"/> L15	3w	Ba15s Single Contact	2700K	270lm
<input type="checkbox"/> L16	3w	Ba15s Single Contact	3000K	270lm
<input type="checkbox"/> L17	3w TF	G4 Bi-Pin	Amber	585-595nm
<input type="checkbox"/> L18	3w TF	Ba15s Single Contact	Amber	585-595nm

(TF) Turtle Friendly Light Source

120 VOLT LED	WATT	SOCKET	KELVIN	LUMEN
<input type="checkbox"/> NL120VDC		Double Contact		
<input type="checkbox"/> NL120VBP		Bi-Pin		
<input type="checkbox"/> L160	3w	Bi-Pin	3000K	400lm

Note: FA97 Sprinkler shield required for 120v. Order as accessory separately.

## OPTIONS

25F 25 Foot Fixture Lead Wire

## CUSTOM STEM LENGTH

Blank 14.50" Standard Stem Length

Custom Length \_\_\_\_\_(S)  
(State Custom Length On the Line Above)

## FINISH (standard finishes listed)

- BLT (Aluminum - Black Texture Powder Coat)
- BRT (Aluminum - Bronze Texture Powder Coat)
- COP (Unfinished- Copper)

Premium and Acid Finishes (See page 4 for more color options)  
Pantone & RAL Colors (Enter RAL or Pantone number at end of part number)

## SHIP WEIGHT

Aluminum 6061 (2.0lbs)  
Copper (3.0lbs)

## ADDITIONAL INFORMATION



Click Icon to Download



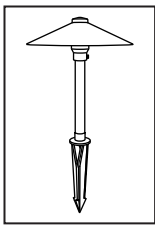
landscape • architectural • hospitality • entertainment • illumination

### FOCUS INDUSTRIES INC.

25301 COMMERCENTRE DRIVE  
LAKE FOREST, CA. 92630  
949.830.1350 | TOLL FREE: 888.882.1350  
WWW.FOCUSINDUSTRIES.COM

DESIGNED  
MANUFACTURED  
IN THE USA





# RXA SERIES AREA LIGHT

RXA03

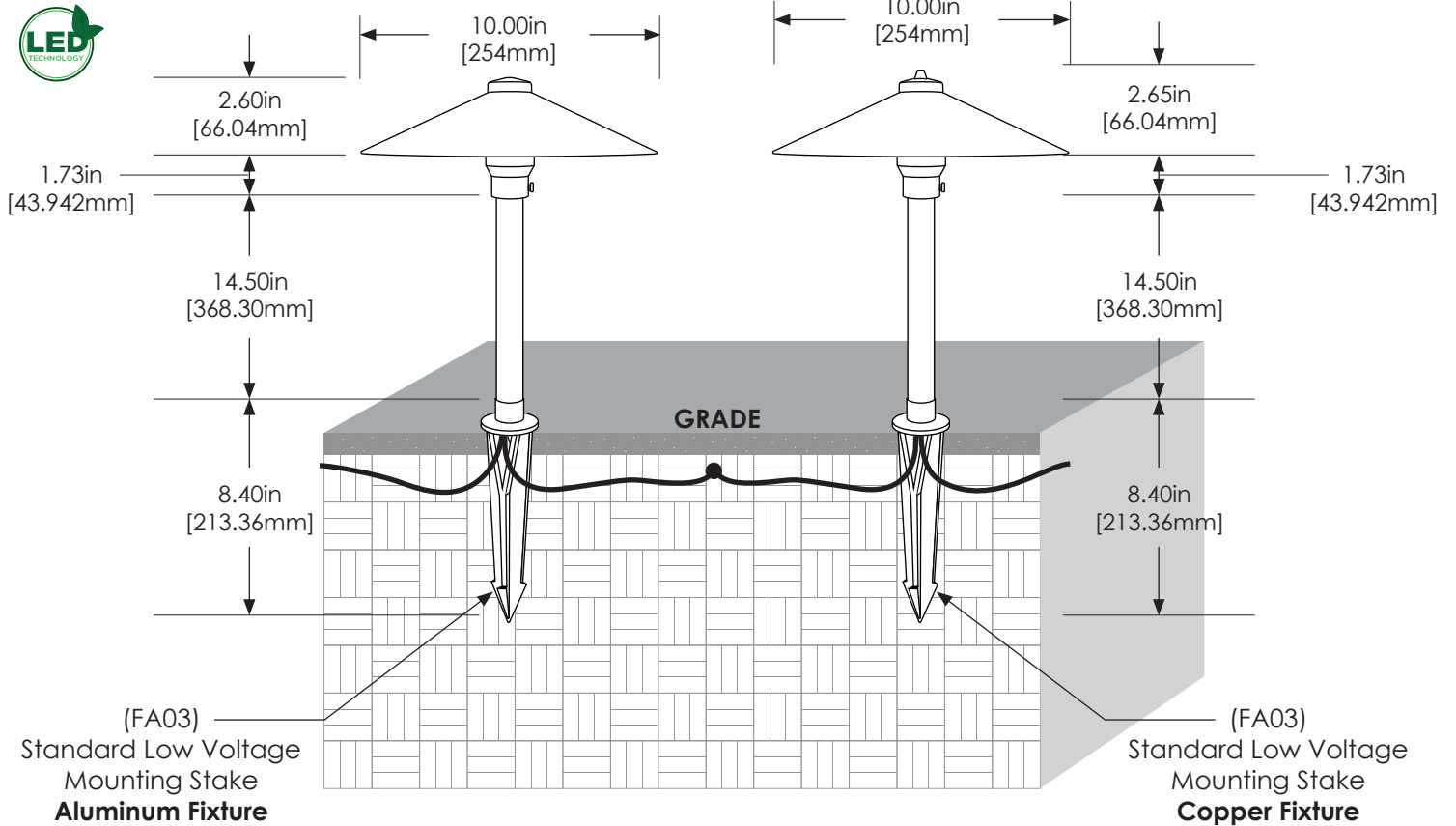
PROJECT:

TYPE:

DATE:

CATALOG NUMBER:

## DIMENSIONS



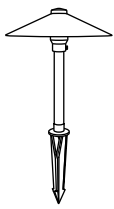
## SPECIFICATIONS

INTERNALS	VOLTAGE	12 Volt (Power with magnetic transformer) / 120 Volt
	WIRING	12 Volt: Standard black 3ft 18/2 zip cord from base of fixture. 120 Volt: ul1015 18AWG 16 STRN bare copper 600v 105°c black, white, green (ground) with M4 terminal ring
	CONNECTOR	Terminal ring star, insulated vinyl, 22-18 AWG #8, Red
EXTERNALS	HAT	Die cast 6061 aluminum or copper china hat 10.00" dia.
	HUB	Die cast aluminum or brass adjustable hub
	STEM	Extrusion, aluminum 6061, round sch 40 pipe, .840" OD x .622" ID x 14.50" L x .109" W Extrusion, copper round sch 40 pipe, .840" OD, .622" ID x 14.50" L x .109" W
	MOUNT	Aluminum version: FA03 ABS black stake, .50" NPS tapped. Low voltage only. (More options available. See page 3.) Copper version: FA03 ABS large black stake, .50" NPS tapped. Low voltage only. (More options available. See page 3.)
	FINISH	Aluminum: Black or Bronze texture (Standard) See page 4 for more powder coat options. Copper: Unfinished (Standard) See page 4 for more powder coat and acid treatment options.
	LISTINGS	ETL, IP65, CE IES files available for download.



**FOCUS INDUSTRIES INC.**  
 25301 COMMERCENTRE DRIVE  
 LAKE FOREST, CA. 92630  
 949.830.1350 | TOLL FREE: 888.882.1350  
 WWW.FOCUSINDUSTRIES.COM





# RXA SERIES AREA LIGHT

RXA03

PROJECT:

TYPE:

DATE:

CATALOG NUMBER:

## ACCESSORIES

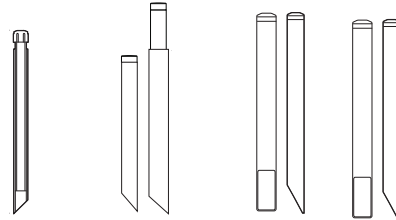
(Configure and order accessories separately)

### Stakes



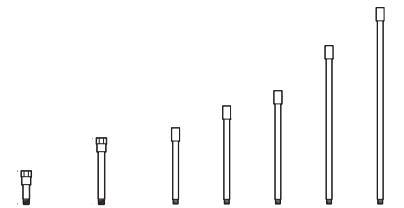
FA03 8.75" (12v)	FA03LG 8.875" (12v)	FA03RX 7.00" (12v)	FA032P 8.235" (12v)	FA033P 8.235" (12v)
------------------------	---------------------------	--------------------------	---------------------------	---------------------------

### Mounting Posts



FA01 15.00" (12v)	FA24MDCSTPOST 13.00" to 16.00" (12v)	FA25 20.00" (12v)	FA26 20.00" (120-277v)
-------------------------	--	-------------------------	------------------------------

### Extension Wands & Couplers



FA30-4 4.00"	FA30-8 8.00"	FA30 10.00"	FA31 13.00"	FA32 16.00"	FA33 21.00"	FA34 26.00"
(12-277v)						

### Canopies



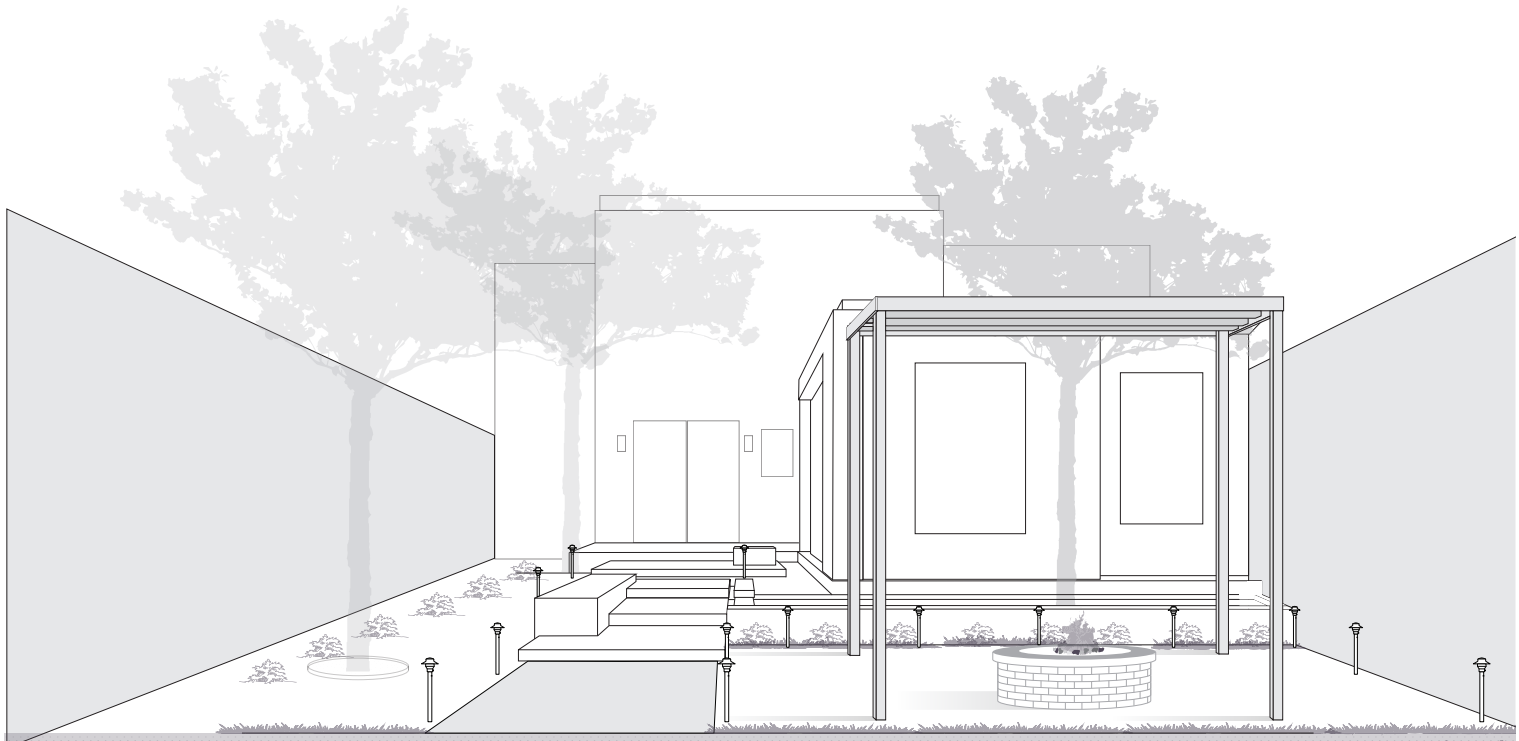
FA24/BRS 3.00" dia. (12v)	FA24MDCST/BRS 2.65" dia. (12v)	FA24MDCSTPC/BRS 2.65" dia. (12v)	FA24LGSPUN/BRS 4.75" dia. (12v)	FA24LGCST/BRS 4.75" dia. (12-277v)	FA22LGCST/BRS 5.75" (12-277v)
---------------------------------	--------------------------------------	--	---------------------------------------	--	-------------------------------------

### Sprinkler Shield



FA97  
1.75" dia.  
(12v)

Note:  
Required for  
120 Volt

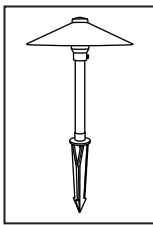


landscape • architectural • hospitality • entertainment • illumination

**FOCUS INDUSTRIES INC.**  
25301 COMMERCENTRE DRIVE  
LAKE FOREST, CA. 92630  
949.830.1350 | TOLL FREE: 888.882.1350  
WWW.FOCUSINDUSTRIES.COM

DESIGNED  
MANUFACTURED  
IN THE USA





# RXA SERIES AREA LIGHT

RXA03

PROJECT:

TYPE:

DATE:

CATALOG NUMBER:

## LED DATA



### 12v OMNI 3 DATA

L#	CCT	CRI	WATTS	LUMENS	RATED HOURS
L10	3000K	80	3	300	50,000
L12	3000K	80	3	300	50,000
L13	2700K	80	3	270	50,000
L14	3000K	80	3	270	50,000
L15	2700K	80	3	270	50,000
L16	3000K	80	3	270	50,000
L17	Amber	~	3	(585-595nm)	50,000
L18	Amber	~	3	(585-595nm)	50,000

### 120v OMNI 3 DATA

L#	CCT	CRI	WATTS	LUMENS	RATED HOURS
L160	3000K	80	3	400	50,000

## FINISHES

### STANDARD FINISHES



Black Texture (-BLT)



Bronze Texture (-BRT)

### PREMIUM FINISHES



Dark Bronze (-DBZ)



Black Magic (-BKM)



White Gloss (-WHT)



White Texture (-WTX)



Stucco (-STU)



Chrome Powder (-CPR)



Weathered Iron (-WIR)



Weathered Brown (-WBR)



Rust (-RST)



Luna (-LUN)



Rubbed Verde (-RBV)



Hunter Texture (-HTX)



Mineral Bronze (-BRZ)

### CUSTOM FINISHES Supply RAL or Pantone here

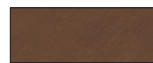
RAL #:

Need help finding a RAL color?  
<https://www.ralcolor.com/>

PANTONE #:

Need help finding a Pantone color?  
<https://www.pantone.com/color-finder>

### ACID FINISHES Brass and Copper fixtures only



Acid Rust Brass (-BAR)  
Copper (-CAR)



Black Acid Treatment Brass (-BAT)  
Copper (-BAT)



Acid Verde Brass (-BAV)  
Copper (-CAV)



landscape • architectural • hospitality • entertainment • illumination

FOCUS INDUSTRIES INC.

25301 COMMERCENTRE DRIVE  
LAKE FOREST, CA. 92630

949.830.1350 | TOLL FREE: 888.882.1350

WWW.FOCUSINDUSTRIES.COM

DESIGNED  
MANUFACTURED  
IN THE USA

