



CIRCULAR PAVER LIGHTS SL-37-P-MR16 SERIES

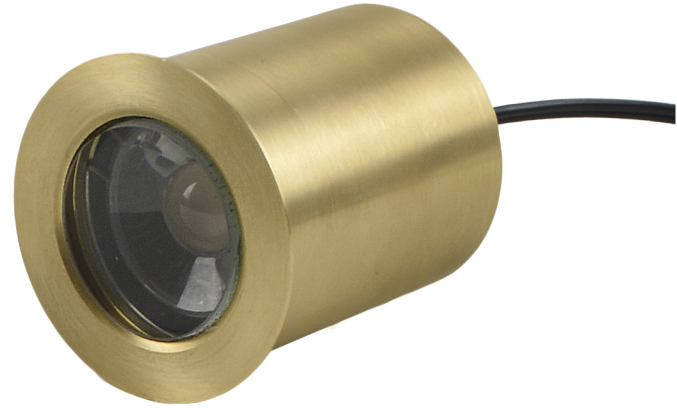


TYPE



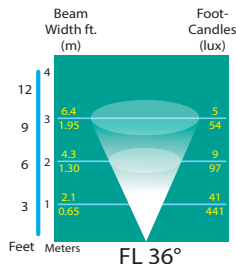
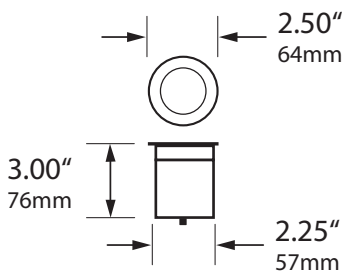
SPECIFICATIONS

- CONSTRUCTION:** Machined brass cylinder with threaded cap
- LENS:** High impact clear tempered step glass
- O-RING:** High temperature red silicone
- LAMP SUPPLIED:** 40,000 hour 3w ARROW Super Saver MR16 LED (-LED3)
- LAMP OPTIONS:** We recommend 40,000 hour 5w (-LED5) or 7w (-LED7) ARROW Super Saver MR16 LED
- SOCKET:** High temperature ceramic bi-pin with 250°C silicone lead wires
- WIRING:** Black 3 foot 18/2 zip cord from base of fixture (12v only)
- CONNECTION:** FA-05 Quick Connector (not supplied) from fixture to main cable (12/2, 10/2 or 8/2 only)
- FINISH:** Unfinished brass. Optional finishes available
- VEHICULAR PRESSURE RATING:** 8800 lbs



ORDERING INFORMATION

CATALOG NO.	DESCRIPTION	LAMP	SHIP WEIGHT
SL-37-P-MR16-LED3-BRS	Circular Brass Paver Light	3w MR16 LED 36° FL	2.0 lbs.



JOB INFORMATION	
Type:	Date:
Job Name:	
Cat. No.:	
Lamp(s):	
Specifier:	
Contractor:	
Notes:	
FOCUS INDUSTRIES INC. 25301 COMMERCENTRE DRIVE LAKE FOREST, CA 92630	
www.focusindustries.com sales@focusindustries.com (949) 830-1350 • FAX (949) 830-3390	

Black Texture (Standard)	Antique Verde	Bronze Texture	Camel	White Texture	Hunter Texture	Rust	Weathered Iron	Weathered Brown	Stucco	Rubbed Verde	Chrome Powder	Acid Rust	Acid Verde	Black Acid Treatment
-BLT	-ATV	-BRT	-CAM	-WTX	-HTX	-RST	-WIR	-WBR	-STU	-RBV	-CPR	-BAR/CAR	-BAV/CAV	-BAT