



INSTALLATION INSTRUCTIONS

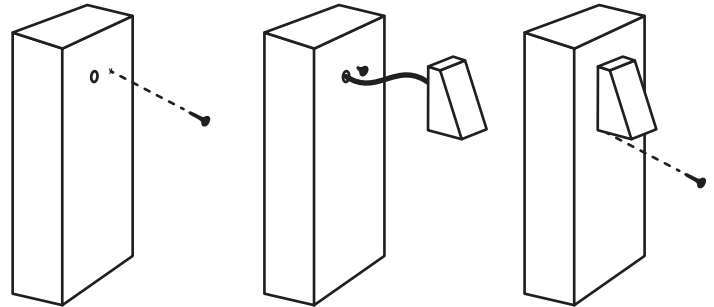
12v SL-35-SM2 POST/SURFACE MOUNT LIGHTS

INSPECTED BY :

CAUTION: If mounting on metal post, fence or other metal structure, fixtures must be wired in polarity. Lead wires from Black wire on sockets must all connect to same wire from transformer. In turn, the leads from white wire on socket will all connect to 2nd wire from transformer creating polarity.

NOTE: To prevent electrical shock, disconnect transformer from electrical supply before installation or service.

1. Using template provided below, mark location of hole for wire feed through and location of screw for key hole mount.
2. Where wire feed through hole is marked, drill a 1/4" hole in post or wall to run supplied 5 foot, 18/2 lead wire through.
3. Using #2 Phillips screw driver attach #6 X 1-1/4" Phillips wood screw provided to wall where location of key hole mount is marked. Leave screw head approximately 3/8" to 1/2" from surface.
Note: Use plastic wall anchors for brick, block, stone or concrete applications.
4. Run 18/2 fixture wire through the hole in post or wall from Step 2 and connect wire to 12v power supply using approved gel filled direct burial wire nuts.
5. Slide fixture key hole over key hole screw and pull down to set fixture firmly in place.
6. (Optional) For added stability add screw through hole near bottom of fixture.
7. Turn on power and check for proper operation of light.



Optional second screw for added stability

LIGHT BULB INSTALLATION/REPLACEMENT

1. Turn off power to fixture.
2. Push lightbulb into socket and rotate counterclockwise to release light bulb.
3. Replace light bulb with correct type bulb marked on fixture label.
4. Push bulb into socket and rotate clockwise to lock into place.
5. Turn power back on and check for proper operation.

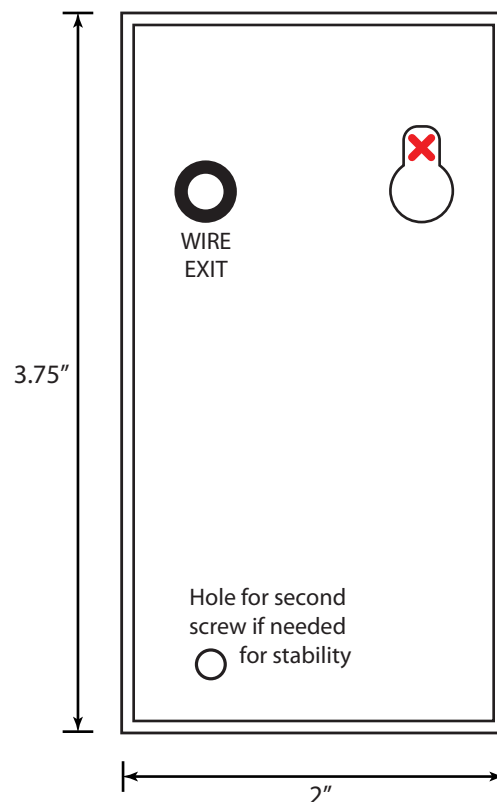
CAUTION:

Do not exceed maximum wattage marked on fixture label.

IMPORTANT SAFETY INSTRUCTIONS TO REDUCE THE RISK OF FIRE AND INJURY TO PERSONS:

1. Fixture gets hot quickly; turn off, unplug/disconnect and allow to cool down before replacing the light bulb.
2. **DO NOT** look into lamp when on.
4. Keep lamp away from materials that may burn.
5. Do not exceed maximum wattage marked on fixture label.
6. Use the correct light bulb base with the correct socket.
7. **DO NOT** touch Halogen lamp at anytime. Use a lint-free cloth when handling the as oil from skin may damage lamp and shorten lamp life.

MOUNTING TEMPLATE



"X" inside key hole marks location of mounting screw

For Questions Call 1-888-882-1350