



# INSTALLATION INSTRUCTIONS FOR FA-35-SL4243-KIT LENS KIT FOR SL-42 & SL-43

INSPECTED BY:

### Contents:



(1) High Impact Acrylic Lens



(1) Aluminum 1/4" x 3/4" Hex Spacer

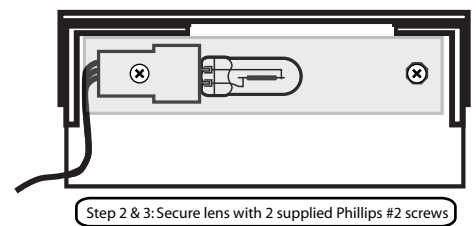
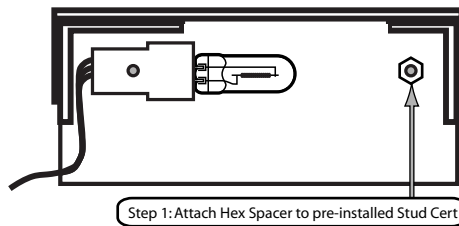
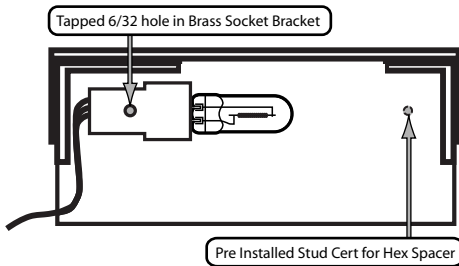


(2) 6/32" x 1/4" Phillips Flat #2 Screws

### Instructions:

1. Thread Hex Spacer onto pre-installed Stud Cert directly across from socket/lamp and hand tighten.
2. Align 2 pilot holes on lens with hole in Socket Bracket and hole in Hex Spacer.
3. Using Phillips #2 screw driver and supplied screws, secure lens to fixture.

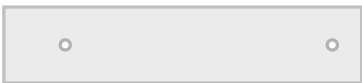
NOTE: Colored lenses are available in Red, Green, Blue and Orange. To install colored lenses simply remove the 2 screws and replace clear lens with colored lens



# INSTALLATION INSTRUCTIONS FOR FA-35-SL4243-KIT LENS KIT FOR SL-42 & SL-43

INSPECTED BY:

### Contents:



(1) High Impact Acrylic Lens



(1) Aluminum 1/4" x 3/4" Hex Spacer



(2) 6/32" x 1/4" Phillips Flat #2 Screws

### Instructions:

1. Thread Hex Spacer onto pre-installed Stud Cert directly across from socket/lamp and hand tighten.
2. Align 2 pilot holes on lens with hole in Brass Socket Bracket and hole in Hex Spacer.
3. Using Phillips #2 screw driver and supplied screws, secure lens to fixture.

NOTE: Colored lenses are available in Red, Green, Blue and Orange. To install colored lenses simply remove the 2 screws and replace clear lens with colored lens

